

NEUROTRANSMITTERS AND SUDS

Neurotransmitters are chemicals that relay, amplify, and modulate signals within the brain. When we introduce drugs into the system it disrupts these pathways and interferes with the way the body and brain communicate.

SEROTONIN

Affects: regulation of mood and impulsivity, sleep, sexual desire, appetite

Drugs that affect it: cocaine, anti-depressants, stimulants, alcohol, hallucinogens

The HIPPOCAMPUS (GABA AND SEROTONIN)

Affects: learning, memory, and depression

Drugs that affect it: alcohol, marijuana

ENDORPHINS & ENDOGENOUS OPIOIDS

Affects: pain relief, sedation, rate of bodily functions, mood, reward/punishment

Drugs that affect it: heroin, opioids, morphine, prescription pain relievers

DOPAMINE

Affects: pleasure/reward, movement, attention, memory

Drugs that affect it: virtually all drugs of use directly or indirectly alter dopamine in the reward pathway

GLUTAMATE (WIDELY DISTRIBUTED IN BRAIN)

Affects: neuron activity, learning, cognition, memory

Drugs that affect it: alcohol

GABA

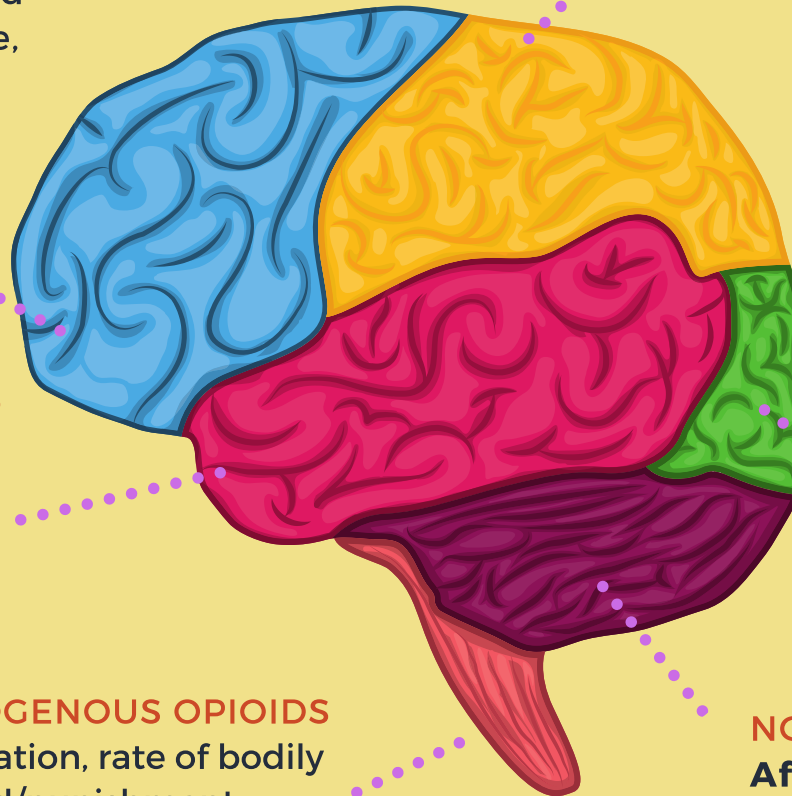
Affects: slowed neuron activity anxiety, memory, anesthesia

Drugs that affect it: alcohol, depressant drugs, marijuana, benzodiazepines

NOREPINEPHRINE

Affects: arousal and alertness, sleep, energy and feelings of pleasure

Drugs that affect it: cocaine and methamphetamine



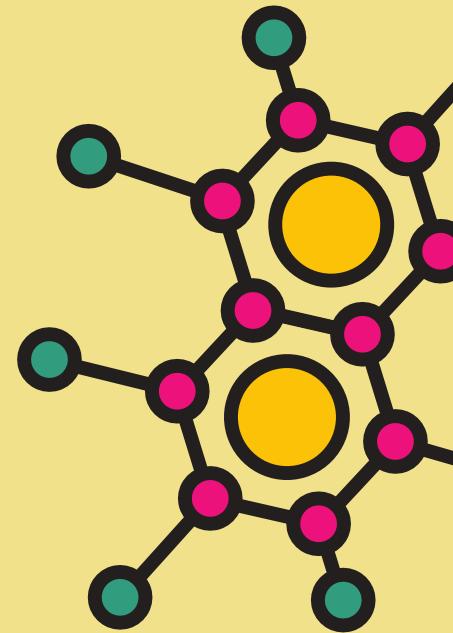
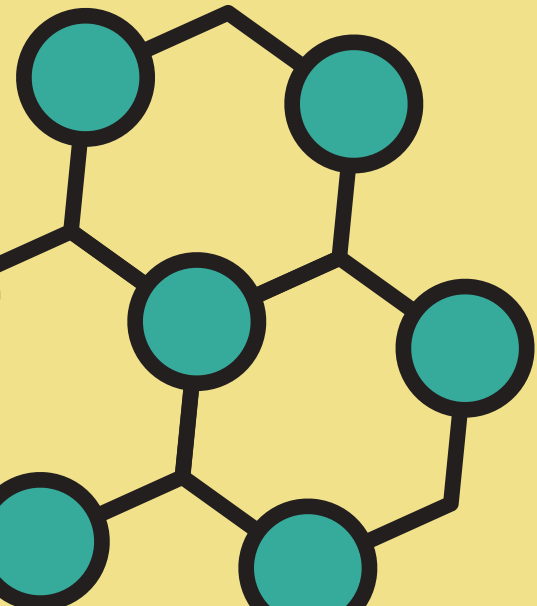


WANT MORE?

**HEAD OVER TO SUBSTANCE
ABUSE AND MENTAL HEALTH
SERVICES ADMINISTRATION AT
SAMHSA.GOV FOR MORE
INFORMATION OR HELP.**

Other resources in this series can be found
through Southeast Addiction Technology Transfer
Center Network at
<https://attcnetwork.org/centers/southeast-attc/home>

Sources by American Addiction Centers, National
Institute on Drug Abuse, Mental Help, Las Vegas
Recovery, and Laguna Treatment



Southeast (HHS Region 4)

ATTC

Addiction Technology Transfer Center Network
Funded by Substance Abuse and Mental Health Services Administration

SAMHSA
Substance Abuse and Mental Health
Services Administration