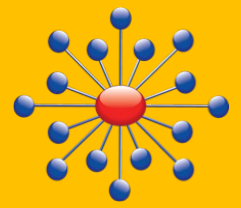




Session Three: Caring for Complex Patients in Resource-Limited Rural Communities



Sponsored and Hosted By:

The Greater Southern California Node (GSCN) of the National Institute on Drug Abuse (NIDA) Clinical Trials Network (CTN), UCLA Integrated Substance Abuse Programs, and Pacific Southwest Addiction Technology Transfer Center (PSATTC), HHS Region 9.

Overview:

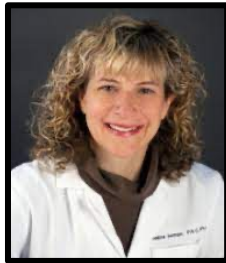
The dramatic increase in opioid overdose deaths across the nation, particularly in rural areas, highlights the need for rapid expansion of access to medication treatment for opioid use disorder (MOUD). The GSCN of the NIDA CTN presents a four-part series featuring rural clinicians and clinical researchers who will share practical knowledge and skills for improving care for patients with OUD in rural settings.

Session three will focus on best care for complex patients. Presenters will share case examples of delivering care to a range of clinically challenging patients within resource-limited rural communities. Presenters will discuss treatment and/or referral in the context of pregnancy, health and mental health comorbidities, and polysubstance use. Presenters will also discuss burn-out and self-care when caring for complex patients.

PRESENTERS



Jennifer Thomas, MD



Debra Newman, PA



Erin Winstanley, PhD

Session Three will be Facilitated by **Laura-Mae Baldwin, MD** of the Pacific Northwest Node

Who should attend?

Physicians, Physician Assistants, Nurse Practitioners, and all other healthcare providers

CMEs and CEs provided at **NO COST**

January 18th, 2023,
from 12:00pm-
1:00pm PST



CLICK HERE TO REGISTER

FUTURE SESSION

The Substance Use Disorder Workforce | February 15, 2023 from 12:00pm-1:00pm PST

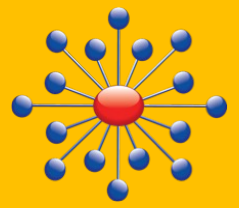
Please contact Maria Hanano (310) 206-9391 or e-mail (mhanano@mednet.ucla.edu) if you have questions, concerns, special needs, or require additional information before registering for this training.

LEARNING OBJECTIVES

1. Participants will be able to recognize two (2) clinical challenges in providing MOUD care in resource-limited rural settings.
2. Participants will be able to explain two (2) considerations in caring for patients in rural communities who continue to use opioids, use multiple substances, or experience co-occurring mental health symptoms, pregnancy, or infectious diseases (HIV or other STIs).
3. Participants will be able to identify provider burn-out and two (2) self-care skills



Greater Sothern California Node of the NIDA CTN



The webinar meets the qualifications for the provision of one (1.0) continuing education credit/contact hour (CE/ CEH).



UCLA Integrated Substance Abuse Programs (ISAP) is approved by the American Psychological Association to sponsor continuing education for psychologists. UCLA ISAP maintains responsibility for this program and its content.

UCLA ISAP is approved by the California Association of Marriage and Family Therapists to sponsor continuing education for LMFTs, LCSWs, LPCCs, and/or LEPs (Provider #64812). UCLA ISAP maintains responsibility for this program/course and its content. Course meets the qualifications for one (1.0) hour of continuing education credit for LMFTs, LCSWs, LPCCs, and LEPs, as required by the California Board of Behavioral Sciences. UCLA ISAP is also an approved provider of continuing education for RADTs I/II, CADCs-CASs, CADCs I/II, CADCs-CSs, and LAADCs (CCAPP, #2N-00-445-1123), CATCs (ACCBC/CAADE, #CP40 872 C 0825), and CAODCs (CADTP, #151).

UCLA Integrated Substance Abuse Programs (ISAP) CME is accredited by the California Medical Association (CMA) to provide continuing medical education for physicians.

UCLA ISAP CME designates that this training course qualifies for the provision of a maximum of one (1.0) *AMA PRA Category 1 Credit™* of Continuing Medical Education (CME). Physicians should claim only the credit commensurate with the extent of their participation in the activity.

The California Board of Registered Nursing recognizes that Continuing Medical Education (CME) is acceptable for meeting RN continuing education requirements as long as the course is certified for *AMA PRA Category 1 Credit™* (rn.ca.gov). Nurses will receive a Certificate of Participation following this activity that may be used for license renewal.

Continuing education credit will be awarded within 6-8 weeks following completion of the webinar.

Refund/Cancellation Policy: Notice of cancellation must be made at least 72 hours in advance of the training by contacting contact Brandy Oeser at (310) 267-5331 or email at boeser@mednet.ucla.edu.

Instructions for Filing a Grievance Concerning UCLA ISAP’s Continuing Education Program: Please contact Dr. Thomas E. Freese, CE Program Administrator, in writing (UCLA ISAP, 10911 Weyburn Avenue, Suite 200, Los Angeles, CA 90024-2886) or by phone (310-267-5397). Alternately, you may contact Dr. Gloria Miele or Dr. James Peck, ISAP-affiliated doctoral-level psychologists responsible for program planning for the ISAP CE Program. Drs. Miele and Peck can be reached in writing at: 10911 Weyburn Avenue, Suite 200, Los Angeles, CA 90024-2886 or by phone at: 310-267-5888 (Miele) or 310-267-5346 (Peck).

If you need a disability-related reasonable accommodation/alternative format for this event, please contact Brandy Oeser at 310-267-5331 or boeser@mednet.ucla.edu by January 11, 2022.

