

# FAMILY RECOVERY Pathways: May 6-8, 2019 Sioux Falls, South Dakota

**ADDICTION, PARENTING, AND IMPLICATIONS FOR PRACTICE**



## Co-Sponsors



Mid-America (HHS Region 7)

**ATTC** Addiction Technology Transfer Center Network  
Funded by Substance Abuse and Mental Health Services Administration



Mountain Plains ATTC (HHS Region 8)

**ATTC** Addiction Technology Transfer Center Network  
Funded by Substance Abuse and Mental Health Services Administration

## Additional Support



Network Coordinating Office  
**ATTC** Addiction Technology Transfer Center Network  
Funded by Substance Abuse and Mental Health Services Administration

**DSS**  
Strong Families - South Dakota's Foundation and Our Future



Mountain Plains (HHS Region 8)  
**PTTC** Prevention Technology Transfer Center Network  
Funded by Substance Abuse and Mental Health Services Administration



## Disclaimer

This conference was produced by the Mid-America Addiction Technology Transfer Center (Mid-America ATTC) 1H79TI080208-01, Network Coordinating Office ATTC 6UR1TI080205-02M002, and the Mountain Plains Addiction Technology Transfer Center (Mountain Plains ATTC) 5UR1TI080200-02 under a cooperative agreement from the Substance Abuse and Mental Health Services Administration (SAMHSA). The opinions expressed in the Family Recovery Pathways Conference presentations are the views of the presenters and do not reflect the official position of the Department of Health and Human Services (DHHS), SAMHSA or CSAT. No official support or endorsement of DHHS, SAMHSA, or CSAT for the opinions described in this program is intended or should be inferred.



# WELCOME TO SOUTH DAKOTA

*Welcome!*

The South Dakota Department of Social Services Division of Behavioral Health and the Division of Child Protection would like to extend a sincere welcome and thank you for attending the Family Recovery Pathways Conference.

As many of our partners in Region VII and Region VIII can attest, the devastation that methamphetamine has on our communities and families is overwhelming. In South Dakota, we have felt the strain of this addiction across all areas of our state and, more significantly, on our families, justice system, child welfare system, and treatment system. We also recognize the negative impact that opioids have on our loved ones.

We look forward to learning from other states and jointly collaborating across disciplines to ensure that the approach we take is well thought out and has the long-term goal of keeping families together.

Thank you for joining us in South Dakota!  
We hope you enjoy your experience.



Tiffany Wolfgang,  
Division Director of Behavioral Health



Virgena Wieseler,  
Division Director of Child Protection Services







On behalf of the Region 7 Mid-America Addiction Technology Transfer Center (ATTC) and Region 8 Mountain Plains ATTC, we welcome you to Sioux Falls, South Dakota. We appreciate the support of the South Dakota Division of Behavioral Health and Division of Child Protection Services, the Mountain Plains Prevention Technology Transfer Center, and the ATTC Network Coordinating Office for their assistance with funding and expertise. Most importantly, we are grateful to our funder, the Substance Abuse Mental Health Services Administration (SAMHSA) and their Regional Administrators for Regions 7 and 8 for their leadership and vision.

The goal of this conference is to bring together professionals who engage with families impacted by substance use disorders including addiction counselors, child welfare workers, justice professionals, and other health and human service staff and offer strategies to engage families in prevention, treatment, and recovery services with a focus on interdisciplinary approaches.

Notably, the focus on the first day will examine the impact of methamphetamine on families and communities. With 30 speakers that possess extensive expertise, we hope you will leave the Family Recovery Pathways: Addiction, Parenting, and Implications for Practice Conference with additional tools to assist in implementing assessment, treatment, recovery support services, and housing and policy strategies.

Here's to a wonderful conference!



Pat Stilen, Co-Director,  
Mid-America ATTC



Thomasine Heitkamp, Co-Directors,  
Mountain Plains ATTC



Nancy Roget, Co-Directors,  
Mountain Plains ATTC



## Conference Purpose

When addiction occurs during motherhood, it affects the whole family and requires a comprehensive, compassionate response by multiple service systems and professionals. New challenges to working with families have emerged as methamphetamine makes a resurgence alongside the opioid epidemic.

The goal of this conference is to bring together professionals who engage with families impacted by substance use disorders (SUD) to provide an opportunity for multidisciplinary exploration of methamphetamine use among caretakers, family-centered care principles, and their application across fields.

The conference days will be organized thematically. Day 1 will focus on the unique impact of methamphetamine use on the brain and attachment, and implications for child welfare and clinical practice. Days 2 and 3 will focus on family-centered program design, policy and funding innovations, clinical approaches, and recovery services to support the whole family.

## Conference Learning Objectives

By the end of this conference, participants will be able to:

- Understand the impact of methamphetamines on the brain and central nervous system.
- Examine best practices in improving the safety, permanency, and well-being of children affected by methamphetamine and other substances.
- Demonstrate an understanding of family-centered care for pregnant and parenting women with substance use disorders.
- Identify evidence-based clinical treatments for pregnant and parenting women with substance use disorders.
- Describe evidence-based practices to support parenting during recovery.
- Identify the possible ways parental substance use disorder impacts child development and effective approaches for supporting prevention and resiliency among children.
- Examine strategies for meaningfully engaging fathers, partners, and extended family members in family-centered care.
- Build funding and policy advocacy strategies that promote family-centered care program sustainability.

# ABOUT THE CONFERENCE SPONSORS

The Family Recovery Pathways Conference is co-sponsored by the Mid-America and Mountain Plains Addiction Technology Transfer Centers (ATTC). Mid-America ATTC serves Iowa, Kansas, Missouri, and Nebraska. Mountain Plains ATTC serves Colorado, Montana, North Dakota, South Dakota, Utah, and Wyoming.

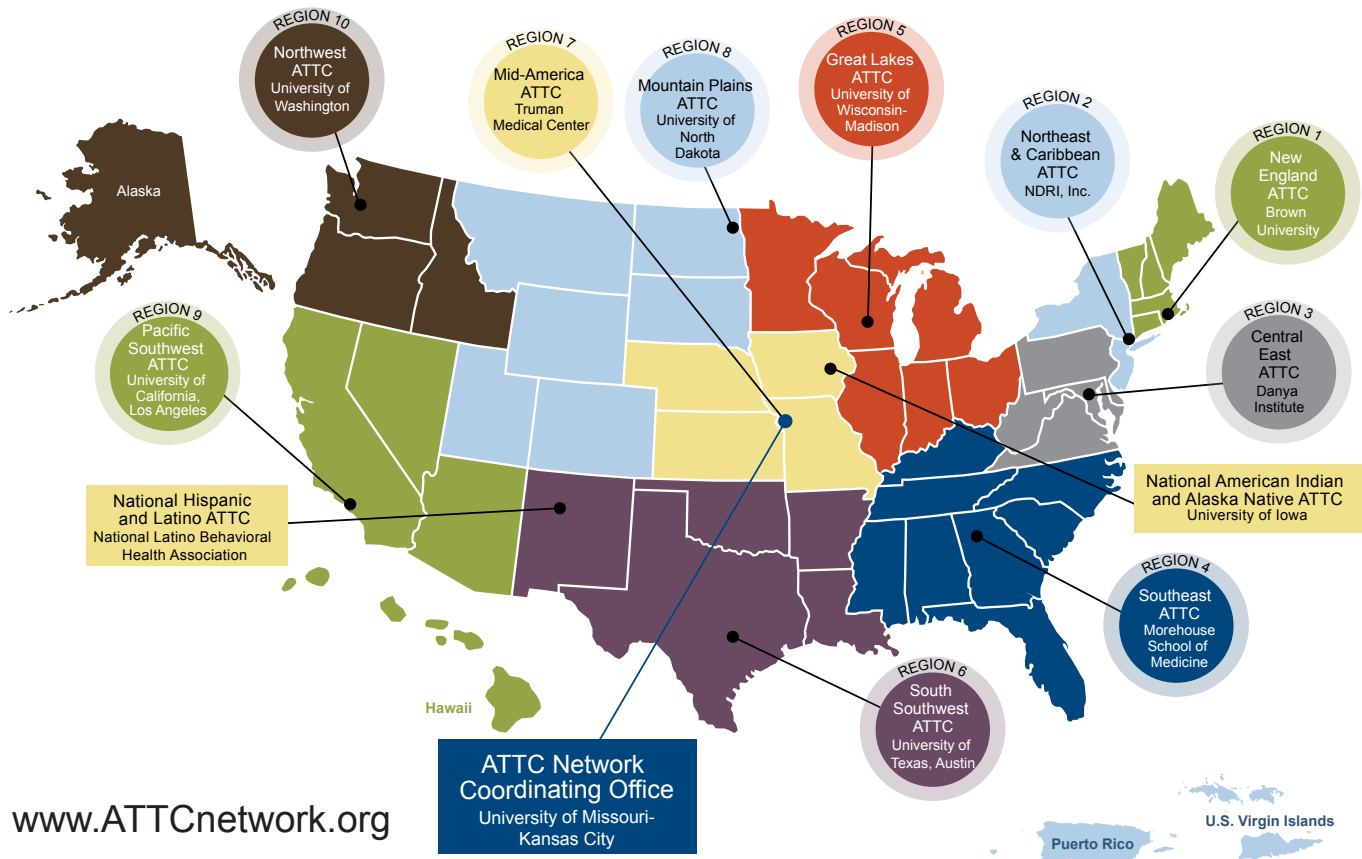
The ATTC Network is an international, multidisciplinary resource for professionals in the addictions treatment and recovery services field.

Established in 1993 by the Substance Abuse and Mental Health Services Administration (SAMHSA), the ATTC Network is comprised of ten Domestic Regional Centers, six International HIV Centers (funded by PEPFAR), two National Focus Area Centers, and a Network Coordinating Office (see map below for US-based ATTCs). The vision of the ATTC Network is to unify science, education, and service to transform lives through evidence-based and promising treatment and recovery practices in a recovery-oriented system of care.



**ATTC** Addiction Technology Transfer Center Network  
Funded by Substance Abuse and Mental Health Services Administration

## U.S.-based ATTC Network



[www.ATTCnetwork.org](http://www.ATTCnetwork.org)



Network Coordinating Office  
**ATTC** Addiction Technology Transfer Center Network  
Funded by Substance Abuse and Mental Health Services Administration



**DSS**  
Strong Families - South Dakota's Foundation and Our Future



Mountain Plains (HHS Region 8)  
**PTTC** Prevention Technology Transfer Center Network  
Funded by Substance Abuse and Mental Health Services Administration

Additional conference support comes from the ATTC Network Coordinating Office, Mountain Plains Prevention Technology Transfer Center (PTTC), and South Dakota Department of Social Services Division of Behavioral Health and Division of Child Protection.

# EVENT CENTER INFORMATION

## Holiday Inn Sioux Falls-City Centre

100 West 8th St

Sioux Falls, South Dakota 57104

Check-in: 3:00 pm / Check-out: 11:00 am

The Family Recovery Pathways Conference will be held at the Holiday Inn Sioux Falls-City Centre. All conference presentations will occur in the Starlite Ballroom located on the 10th floor. Conference check-in will occur in the Palisades II & III, 1st floor

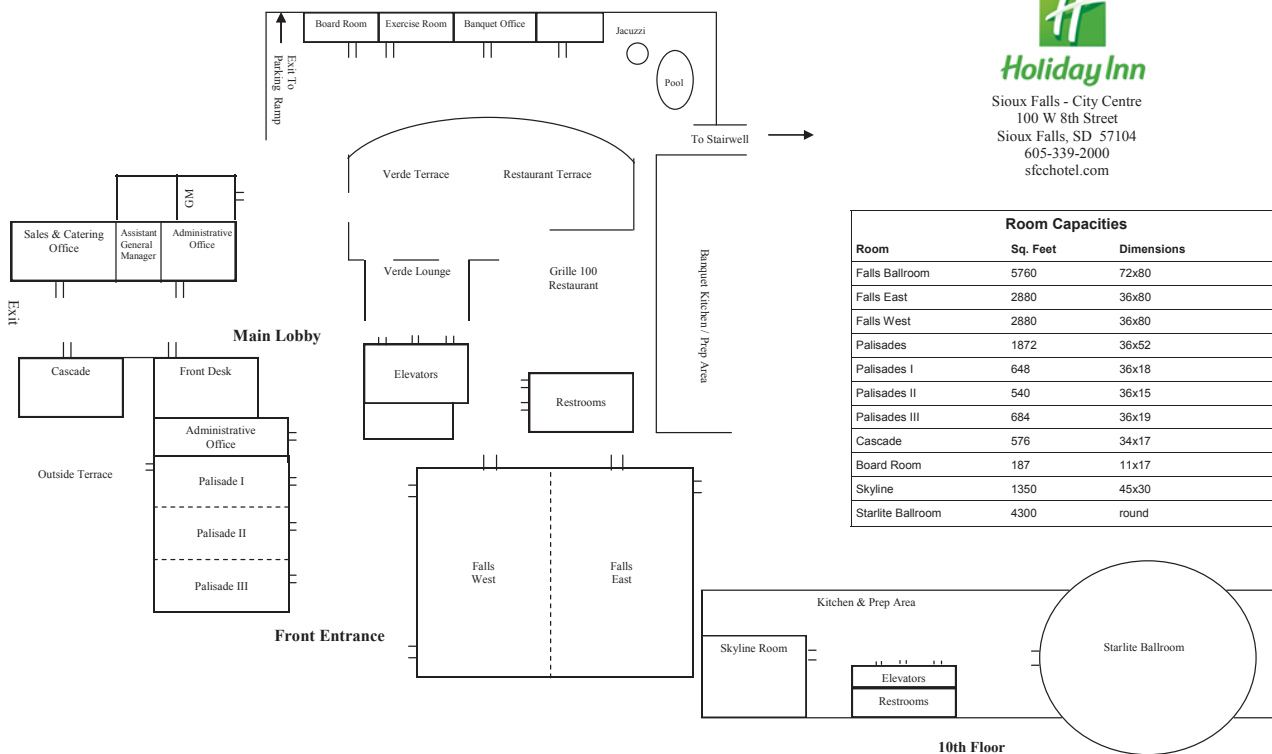
(Sunday, May 5, 4:30 - 6:30 pm); Palisades Room, 1st floor (Monday, May 6, 7:30 - 8:30 am); and Skyline Room, 10th floor (Tuesday, May 7 and Wednesday, May 8, 7:30 - 8:30 am).

See below for a hotel map showing the locations of these rooms:



**Holiday Inn**

Sioux Falls - City Centre  
100 W 8th Street  
Sioux Falls, SD 57104  
605-339-2000  
sfchotel.com



## Parking

For conference attendees staying at the hotel, a \$5 parking fee/per night will show on your room bill. The hotel offers two parking options. Surface parking located in front of the hotel and a two level parking ramp behind the hotel. Parking is complimentary for conference guests not staying overnight at the hotel.



## Accessibility

All public hotel areas are accessible (self-parking, public entrances, elevators, public restrooms, conference rooms, business center).

# EVENT CENTER INFORMATION

## Conference Check-In

Early conference check-in will be offered from 4:30 to 6:30 pm on Sunday, May 5 in the Palisades II & III room (1st floor) of the Holiday Inn.

Daily Conference check-in's will be 7:30 to 8:30 am. Check-in will be located at the following locations:

Day One, Monday, May 6, Palisades Room (1st floor).

Day Two (Tuesday, May 7) and Three (Wednesday, May 8), Skyline Room (10th floor where Starlite Ballroom is located).

## Internet Access in Conference Room

Free WI-FI will be offered during the conference.

Use this password to connect: FSDDT.



# CONFERENCE INFORMATION

## Continuing Education

Participants can earn up to 18.5 free continuing education contact hours.

This event has been approved by the following organizations:

- Iowa Board of Certification
- Missouri Credentialing Board
- National Association of Alcohol & Drug Abuse Counselors (NAADAC)
- National Association of Social Workers (NASW)
- National Board for Certified Counselors (NBCC)

This training is deemed alcohol and drug specific and will be accepted for continuing education for Licensed Alcohol and Drug Counselors in Nebraska

## Sign-in Requirements

Each day, participants desiring CE must sign in at the beginning of the day and sign out at the end of the day in order to obtain CEs.

## How will I get my certificate?

Certificates will be available digitally to all registrants after the conference. Instructions regarding how to obtain your digital certificate will be sent to the email address provided during registration.

## Conference Materials

All conference materials are available for free download on the ATTC Network Site: <https://attcnetwork.org/centers/mountain-plains-attc/bring-them-all>

## Meals Provided at the Conference

Breakfast and lunch are provided all days of the conference. Specific meal times are provided in the conference agenda. All meals will be served in the Skyline Room and eaten in the Starlite Ballroom, located on the 10th floor located on the 10th floor (unless announced otherwise at the event).

# AGENDA

## Sunday – May 5, 2019

4:30 – 6:30 pm **Early check-in**  
(1st floor, Palisades II & III Room)



### CHILD WELFARE IMPACT AND RESPONSE

## Monday – May 6, 2019

**Methamphetamines: Child Welfare Impact and Response**

**6:45 – 8:30 am Continental Breakfast**  
(1st floor, Restaurant Terrace)

**7:30 – 8:30 am Check-in**  
(1st floor, Palisades Room)

**8:30 – 8:45 am WELCOME**

### **Mountain Plains Addiction Technology Transfer Center**

Thomasine Heitkamp, MSSW, LICSW,  
Co-Director, Mountain Plains ATTC  
Nancy Roget, MA, MFT, LADC, Co-Director,  
Mountain Plains ATTC

### **South Dakota, Department of Social Services**

Tiffany Wolfgang,  
Division Director, Behavioral Health  
Virgena Wieseler,  
Division Director, Child Protection Services

### **United States Department of Health and Human Services**

**South Dakota Welcome**  
State Official

**8:45 – 9:30 am PRESENTATION**  
**Building Powerful Collaborations for Families Affected by Substance Use**

### **Disorders**

Nancy Young, PhD, Director, National Center on Substance Abuse and Child Welfare

**Introduction:** Pat Stilen, MSW, Co-Director, Mid-America Addiction Technology Transfer Center (Mid-America ATTC)

**9:30 – 10:30 am PRESENTATION**

### **Advancing Practice with Parents and Caregivers Impacted by Methamphetamine Use**

Jade Woodard, MPA, Executive Director, Illuminate Colorado – Colorado Alliance for Drug Endangered Children

**Introduction:** Charlie Smith, PhD, SAMHSA Regional Administrator, Region VIII, U.S. Department of Health and Human Services (SAMHSA RA Region VIII, DHHS)

**10:30 – 10:45 am BREAK**

**10:45 – 11:45 am PRESENTATION**

### **Examining the Role of Methamphetamine in Permanence: Issues that Impact Reunification, Guardianship, and Adoption**

Margaret H. Lloyd, PhD, Assistant Professor, University of Connecticut School of Social Work

**Introduction:** Nancy Roget, MA, MFT, LADC, Co-Director, Mountain Plains Addiction Technology Transfer Center

**11:45 – 12:15 pm LUNCH BUFFET AND BREAK**

*Lunch is provided. Hotel staff will direct dismissal of tables to the buffet line in the Skyline Room and return to the conference room for seating. Please be in your seats by 12:15 pm for the lunch presentation.*

### **Methamphetamine Use: Current Trends, Impact on the Brain, and Implications for Treatment and Recovery**

Beth Rutkowski, MPH, Co-Director, Pacific

# AGENDA



## CHILD WELFARE IMPACT AND RESPONSE

Southwest Addiction Technology Transfer Center

**Introduction:** Nancy Roget, MA, MFT, LADC, Co-Director, Mountain Plains ATTC

### **1:15 – 2:00 pm PRESENTATION** **An Update of the MATRIX Model Including Medication-Assisted Treatment (MAT) for Opioid Use Disorder**

Sam Minsky, MA, LMFT, National and International MATRIX Model Trainer

**Introduction:** Stacy Krall, MS, LAC, Program Specialist II, Addiction Program Specialist, South Dakota DBH

### **2:00 – 2:15 pm BREAK**

### **2:15 – 3:30 pm PANEL DISCUSSION** **Evidence-Based Treatment Practices for Substance Use Disorder and Child Welfare Practitioners: Working in Tribal Communities**

Panelists:

- Sara DeCoteau, Sisseton-Wahpeton Oyate of the Lake Traverse Reservation, Health Coordinator
- Sean Bear, BA, CADC, Co-Director, National American Indian Alaska Native ATTC
- Ed Parsells, LAC, Clinical Director, Rosebud Sioux Tribe Meth Rehabilitation Program, Meskwaki Tribal member, Cheyenne River Sioux Tribe
- Beth Rutkowski, MPH, Co-Director, Pacific Southwest ATTC

- Sam Minsky, MA, LMFT, National and International MATRIX Model Trainer

**Facilitator:** Charlie Smith, PhD, SAMHSA RA Region VIII, DHHS

### **3:30 – 4:30 pm PRESENTATION** **The Power of Peers: Peer Recovery Support Models for Child Welfare-Involved Families**

Kurt B. Smith, CADC II, CRM, Treatment Director, Bay Area First Step, Inc. (BAFS)  
Cari Debban, CRM, CADC I, Housing Director, BAFS

**Introduction:** Nancy Roget, MA, MFT, LADC, Co-Director, Mountain Plains ATTC

### **4:30 – 5:00 pm CLOSING**

### **A Journey through Addiction to Recovery** Tiffany Wolfgang, Director, South Dakota DSS-DBH

Thomasine Heitkamp, MSSW, LICSW, Co-Director, Mountain Plains ATTC

Please complete your conference evaluations!

# AGENDA



INTERDISCIPLINARY APPROACHES TO FAMILY-CENTERED CARE

**Tuesday – May 7, 2019**

**Bring Them All: Interdisciplinary Approaches to Family-Centered Care**

**6:45 – 8:30 am Continental Breakfast**

(1st floor, Restaurant Terrace)

**7:30 – 8:30 am Check-in**

(1st floor, Palisades Room)

**8:30 – 8:40 am WELCOME**

Pat Stilen, MSW, Co-Director, Mid-America ATTC

**8:40 – 9:15 am PRESENTATION**

**Adverse Childhood Experiences**

Heidi Heitkamp, JD, Former United States Senator

**Introduction:** Thomasine Heitkamp, MSSW, LICSW, Co-Director, Mountain Plains ATTC

**9:15 – 10:15 am PRESENTATION:**

**Trauma-Informed and Culturally Sensitive Care for Families**

Karina Forrest-Perkins, Chief Executive Officer (CEO), People's Center Clinic and Services

**Introduction:** Pat Stilen, MSW, Co-Director, Mid-America ATTC

**10:15 – 10:30 am BREAK**

**10:30 – 11:30 am SPECIAL TOPIC**

**Families First Opportunities**

- Marilyn Kennerson, Administration for

- Children and Families (ACF) Children's Bureau Regional Specialist, Region VIII
- Deborah Smith, Administration for Children and Families (ACF) Children's Bureau Regional Specialist, Region VII

**Introduction:** Thomasine Heitkamp, MSSW, LICSW, Co-Director, Mountain Plains ATTC

**11:30 – 12:15 pm LUNCH**

*Lunch will be provided. Hotel staff will direct dismissal of tables to the lunch buffet in the Skyline Room and return to the conference room for seating. Please return to your seats by 12:15 pm for the lunch presentation.*

**12:15 - 1:15 pm PRESENTATION:**

**Pregnancy and Parenting in the Midst of a Methamphetamine Epidemic**

Marcela Smid, MD, MA, MS, Assistant Professor, University of Utah Department of Obstetrics and Gynecology, Division of Maternal Fetal Medicine

**Introduction:** Nancy Roget, MS, MFT, LADC, Co-Director, Mountain Plains ATTC

**1:15 – 2:15 pm PANEL DISCUSSION**

**Policy Approaches to Support Family-Centered Care**

Panelists:

- Michele Tilotta, MPA, BSN, RN, SABG, Manager, Iowa Department of Public Health
- Stacy Krall, MS, LAC, Addiction Program Specialist, Women's, Women's Services Network Coordinator, South Dakota DBH
- Karina Forrest-Perkins, CEO, People's Center Clinic and Services
- Susan Nichols, Child Welfare Program Specialist, Administration for Children and Families-Region VIII
- Nancy Young, PhD, Director, National Center on Substance Abuse and Child Welfare



# AGENDA



INTERDISCIPLINARY APPROACHES TO FAMILY-CENTERED CARE

**Facilitator:** Charlie Smith, PhD, SAMHSA RA Region VIII, DHHS

**2:15 – 2:30 pm BREAK**

**2:30 – 3:45 pm PANEL DISCUSSION**  
**Family-Centered Housing Strategies**

Panelists:

- Tammie Denning, Interlakes Community Action Partnership
- James Glenn, MSW, Project Director, Truman Medical Centers - Behavioral Health, Mid-America ATTC
- Karina Forrest-Perkins, CEO, People's Center Clinic and Services
- Kimberly Craig, Chief Executive Officer (CEO), CHEEERS Recovery Center
- Kurt B. Smith, CADC II, CRM, Treatment Director
- Cari Debban, CRM, CADC I, Housing Director, BAFS

Facilitator: Kim Nelson, SAMHSA RA Region VII, DHHS

**3:45 – 4:45 pm PANEL DISCUSSION**  
**Pregnancy as an Opportunity for Intervention**

Panelists:

- Sharon Hesseltine, BSW, President and Chief Executive Officer (CEO), Intentional Beginnings, LLC.
- Ruth Paris, PhD, Associate Professor/Chair, Clinical Practice Department, Boston University School of Social Work

- Maridee Shogren, DNP, CNM, Technical Trainer, University of North Dakota (UND), College of Nursing, Mountain Plains ATTC
- Marcela Smid, MD, MA, MS, Assistant Professor at the University of Utah (UofU) Department of Obstetrics and Gynecology, Division of Maternal Fetal Medicine

**Facilitator:** Kim Nelson, SAMHSA RA Region VII, DHHS

**4:45 – 5:00 pm WRAP-UP**  
**Make the Connection! Regional Networking Learning Opportunity**

**Facilitators:** Pat Stilen, MSW, Co-Director, Mid-America ATTC; Thomasine Heitkamp, MSSW, LICSW, Co-Director, Mountain Plains ATTC

Please complete your conference evaluations!

# AGENDA



INTERDISCIPLINARY APPROACHES TO FAMILY-CENTERED CARE

**Wednesday – May 8, 2019**

**Bring Them All: Interdisciplinary Approaches to Family-Centered Care**

**6:45 – 8:30 am Continental Breakfast**

(1st floor, Restaurant Terrace)

**7:30 – 8:30 am Check-in**

(1st floor, Palisades Room)

**8:30 – 9:00 am WELCOME**

**Participant Reflections and Questions**

Pat Stilen, MSW, Co-Director, Mid-America ATTC

Thomasine Heitkamp, MSSW, LICSW,  
Co-Director, Mountain Plains ATTC

**9:00 – 10:15 am PRESENTATION**

**Engaging Fathers More Effectively**

Dan Griffin, Owner/Lead Consultant, Griffin Recovery Enterprises, Inc.

**Introduction:** Pat Stilen, MSW, Co-Director,  
Mid-America ATTC

**10:15 – 10:30 am BREAK**

**10:30 – 11:30 am PANEL DISCUSSION**

**Prevention and Recovery Supports for the Whole Family**

Panelists:

- Sharon Hesseltine, BSW, President/CEO, Intentional Beginnings, LLC.
- Dan Griffin, Owner/Lead Consultant, Griffin Recovery Enterprises, Inc.
- Ruth Paris, PhD, Associate Professor/

Chair, Clinical Practice Department, Boston University School of Social Work

- Mary Jo McMillen, Executive Director, Utah Support Advocates for Recovery Awareness (USARA)
- Darlene Schultz, CRAFT Family Support Coordinator, Utah Support Advocates for Recovery Awareness (USARA)

**Facilitator:** Jason Burrow-Sanchez, PhD, Mountain Plains Prevention Technology Transfer Center (PTTC)

**11:30 – 12:00 pm LUNCH**

*Lunch will be provided. Participants will have 30 minutes for a box lunch break. Please be in your seat in the Starlite Ballroom by 12:00 pm for the panel discussion.*

**12:00 – 12:30 pm PANEL DISCUSSION:  
Example Innovators from the Family-Centered Care Learning Collaborative**

Panelists:

- Heather Bird and Monica Meier, Heartland Family Services, Omaha, Nebraska
- Susan Montague and Amanda Pfannenstiel, Saint Francis Ministries, Salina, Kansas
- Paige Edgington and Andy Smith, House of Mercy, Des Moines, Iowa

**12:30 – 1:45 PM EXPO TABLE DISCUSSIONS  
Implementing Family-Centered Care Innovation**

**1. Persons with Lived Experience and Trauma-Informed Care:**

Karina Forrest-Perkins, CEO, People's Center Clinic and Services; Kurt Smith and Cari Debban, Bay Area First Step, Inc.

**2. Implementing Family-Centered Clinical Practices:**

Ruth Paris, PhD, Associate Professor/ Chair, Clinical Practice Department, Boston University School of

# AGENDA



## INTERDISCIPLINARY APPROACHES TO FAMILY-CENTERED CARE

Social Work; Sharon Hesseltine, President/ CEO Intentional Beginnings, LLC.; Diana Kramer, Cultural Inclusion Consultant

**3. Family Housing Strategies:** James Glenn, Mid-America ATTC and Truman Medical Centers - Behavioral Health; Kimberly Craig, CEO, CHEEERS Recovery Center

**4. Prevention and Recovery Supports:** Mary Jo McMillen, Executive Director and Darlene Schultz, CRAFT Family Support Coordinator, USARA; Jason Burrow-Sanchez, PhD, Co-Director, Mountain Plains PTTC; Nancy Roget, MS, MFT, LADC, Co-Director, Mountain Plains ATTC

**5. Engaging Fathers & Family:** Dan Griffin, Owner/Lead Consultant, Griffin Recovery Enterprises, Inc.

**Facilitators:** Diana Kramer, Cultural Inclusion Consultant; Kimberly Craig, CEO, CHEEERS Recovery Center

### **1:45 – 2:00 pm CLOSING**

Pat Stilen, Mid-America ATTC Co-Director  
Thomasine Heitkamp and Nancy Roget,  
Mountain Plains ATTC Co-Directors

Please complete your conference evaluations!

# SPEAKER BIOS

**Sean A. Bear** earned his B.A. from Buena Vista University, double majoring in psychology and human services. He also studied mental health counseling at Drake University for two years. He has not graduated as of yet, but still intends to graduate with his Master's degree. He is a member of the Meskwaki Tribe in Tama, Iowa, and has worked with Native Americans with substance use issues for many years. He received his third honorable discharge from the Army after more than nine years of service and served with the 82nd Airborne Division. His passion is to assist people in overcoming the many obstacles within life and themselves, and to return to the spiritual ways of their ancestors. It is his hope that one day, people of all nations will co-exist and live in peace and harmony, not just with each other, but within themselves, as well as to come to the realization of what our ancestor of long ago already knew, "that we are all brothers and sisters under one Creator."

**Kimberly Craig** is the CEO / President of the CHEEERS Recovery Center in Phoenix, Arizona, where she leads an organization that meets the needs of individuals who have serious mental illness and substance use disorders utilizing EBP for the delivery of peer support services. Prior to CHEEERS, Kimberly served as Vice President of Women's and Children's Programs for 11 years with a Behavioral Health provider in Phoenix, where she developed and managed evidence-based programs for pregnant and post-partum women and their families. Programs under her leadership included residential for women and their children, intensive outpatient, and 48 units of supportive housing. This program was a recipient of SAMHSA PPW funding in 2011 and successfully expanded services to engage fathers and the younger and older children of the women. Kimberly also successfully transitioned the residential program to outpatient day treatment

with a supportive housing component in 2014.

**Sarah DeCoteau** a Health Coordinator, provides administrative and coordination support for the Tribal Health Service Programs of the Sisseton-Wahpeton Oyate of the Lake Traverse Reservation. She is in her 45th year with the Tribe. It was her privilege to work with and be mentored by the original Health Council members of this Tribe, who worked to eradicate tuberculosis in the 1950s and went on to develop many of the programs they have today. She has also been involved with the Great Plains Tribal Chairmen's Health Board since its inception and attended meetings of its two predecessors, the Four State Indian Health Board and the Lakota TB & Health Association. During her tenure, she has worked with 21 different Tribal Councils, 19 different administrations, 18 Tribal Secretaries, and 9 Indian Health Service Chief Executive Officers. In 2001, the Tribal Council granted her the privilege of honorary membership by adopting Tribal Council Resolution No. SWST-01-031. She was honored twice by the Great Plains Tribal Chairmen's Health Board for dedication, commitment and contributions to health improvement in the Aberdeen Area. She has represented the Great Plains (formerly "Aberdeen") Area and Sisseton-Wahpeton Oyate on regional and national workgroups, including budget formulation, health facilities construction priority criteria, the Governor's Task Force on Infant Mortality and the South Dakota Health Care Solutions Coalition. In 2009, she was recognized as a Community Wellness Champion by the Aberdeen Area Indian Health Service. In August 2015, DeCoteau received a "Certificate of Special Recognition and Appreciation" presented by the IHS Direct Service Tribes Advisory Committee for dedicated service and significant contributions to Indian Health Service Direct Service Tribes healthcare programs and enhancing the mission of the Direct Service Tribes Advisory Committee."



# SPEAKER BIOS

**Cari Debban** is the Housing Director for Bay Area First Step (BAFS). BAFS is a peer run organization providing housing and peer support in rural Oregon. She manages a 24-bed Transitional Housing program, a 20-bed Emergency Shelter, and 57 units of drug- and alcohol-free permanent supportive housing. Her work involves coordinating housing and services for Coos County Community Corrections, Coos Health & Wellness - Behavioral Health, DHS - Child Welfare, emergency shelter, and local treatment provider consumers. She is a Certified Recovery Mentor (CRM) and a Certified Alcohol and Drug Counselor (CADC I). She is also a lead instructor for Recovery Happens, an Oregon Health Authority (OHA) and Addiction Counselor Certification Board of Oregon (ACCBO) approved Peer Support Specialist (PSS) training program for adult addictions.

**Tammie Denning**, is the Sioux Falls Community Service Director for Inter-Lakes Community Action Partnership where she has been employed for the past 19 years. She oversees the Minnehaha County office where her passion lies in helping families with children move from homelessness to permanent housing. Tammie holds a Bachelor of Arts degree in Psychology, Sociology and Criminology from South Dakota State University and has been a part of the human services community for the past 28 years. In her spare time, Tammie enjoys spending time with family, camping at the Missouri River and reading.

**Karina Forrest-Perkins** is a national speaker and consultant on systems improvement and integrated health strategies. Ms. Forrest-Perkins currently serves as Chief Executive Officer for People's Center Clinics and Services, a federally qualified community health center in Minneapolis, Minnesota. Ms. Forrest-Perkins recently served

as the Chief Executive Officer for Wayside Recovery Center (The Wayside House), a women's chemical dependency and co-occurring treatment center in Minneapolis, St. Louis Park, and St. Paul, Minnesota. Ms. Forrest-Perkins has served as a staff member or task force appointee in three Oklahoma Governors' administrations and one Minnesota Governor's administration, all in positions that advanced the quality of healthcare, the practices of trauma-responsive behavioral health, and cross system collaborations benefiting families. She currently consults as a subject matter expert (SME) for the Mid-America Addiction Technology Transfer Center, the Education Development Center (EDC), and the Heartland National Tuberculosis Center as it relates to the intersections between historical trauma, cultural perspective, substance misuse, health equity, and whole family health. Ms. Forrest Perkins has a Master's Degree in Human Relations and Counseling from the University of Oklahoma and is pursuing her MBA in organizational behavior from Harvard Business School. Ms. Forrest-Perkins is a 2017 Bush Foundation Leadership Fellow researching increased access for individuals in the most vulnerable circumstances. She lives in Robbinsdale, Minnesota, with her husband, Jack, and cat, Gus. Their four children live in Oklahoma, Georgia, and Nevada.

**James Glenn** is the Associate Administrator and Business Strategist at Truman Medical Centers (TMC) Behavioral Health. He joined TMC Behavioral Health in June 2016, after serving as a housing consultant for the previous two years. Prior to TMC, James was the founder and former Executive Director of Kim Wilson Housing and the Senior Vice President of Housing and Community Services at the Mental Health Association of the Heartland. In addition to his role at TMC, James is a Senior Fellow with the Cookingham Institute of Urban Affairs and is the Founder, Principal,

# SPEAKER BIOS

and Lead Consultant of Glenn & Company, LLC, a consulting, coaching, and capacity-building organization that helps to create social enterprise endeavors and synergistic opportunities among businesses and nonprofits.

**Dan Griffin** has worked in the mental health and addictions fields for more than two decades. He is recognized internationally as an expert on men's issues with a particular focus on relationships and trauma. He is the owner, founder, and lead consultant of Griffin Recovery Enterprises, Inc. (GRE). GRE launched a new division focused on fathers in 2014. Griffin's last book, *A Man's Way through Relationships*, is the first trauma-informed book written to help men create healthy relationships. Griffin is also the author of *A Man's Way through the Twelve Steps*, the first trauma-informed book to take a holistic look at men's recovery. Dan is the author of the forthcoming book *Awesome Dads! New Rules for the 21st Century Father*. Dan is also the co-author of *Amazing Dads! Healing the Father Within*, the first trauma-informed curriculum for dads. Griffin lives in California with his wife, Nancy, and his daughter, Grace.

**Heidi Heitkamp** served as a United States Senator from North Dakota from 2013 – 2019. She also served as the North Dakota Attorney General from 1992 to 2000 and the North Dakota Tax Commissioner from 1986 to 1992. While serving as US Senator, she worked diligently to create a greater understanding of the role of trauma and substance use disorders. Her work on the Trauma Informed Care for Children and Families Act, with provision of the Opioid Crisis Response Act, is particularly noteworthy to support behavioral health and child welfare professionals.

**Sharon Hesselstine**, BSW is the founder and CEO of Intentional Beginnings in Louisville, KY, providing

consultation and training to improve services for individuals who have a substance use disorder, with a specific focus on pregnant and parenting women. She is also the Technology Transfer Specialist covering Kentucky and Tennessee for the Opioid Response Network National TA System. Sharon received a Bachelor of Science in Social Work from Southern Illinois University, and has a postgraduate Certificate in Infant and Early Childhood Mental Health from the University of Minnesota. For more than 30 years, Sharon has worked in public health in both Southern Illinois and Minnesota and specialized in early childhood development, women's health, and addiction. Her career has ranged from providing direct services to women through managing two sober living residences to designing and facilitating statewide and local collaborative initiatives that call on her skills in public policy, strategic planning, cross-sector collaboration, program assessment, and marketing. She has been a national trainer for multiple organizations. Locally, Sharon provides infant mental health consultation and training for SUD treatment programs serving pregnant and parenting women with infants and facilitating community collaborations to support those serving PPW. Most recently she has developed a training curriculum for Recovery Peer Support Specialists for the Commonwealth of Kentucky, as well as a training curriculum for their supervisors. As a mother and grandmother in long-term recovery, Sharon is passionate about developing the capacity of organizations and individuals to better meet the needs of individuals and families with substance use disorders. With her husband, Scott Hesselstine, she currently resides in Louisville, KY.

**Marilyn Kennerson**, MSW, is the Regional Program Manager for Region 8 for The Administration for Children and Families (ACF). ACF is a division of the Department of Health & Human Services and they promote the economic and social well-being of families, children, individuals, and communities.

# SPEAKER BIOS

**Stacy Krall** currently serves as an Addiction Program Specialist for the Division of Behavioral Health. She obtained her Bachelor of Science degree in Psychology in the State of South Dakota. She obtained her Masters of Science Degree in Management in Criminal Justice in 2009 from Colorado Technical University-Sioux Falls. Stacy is currently responsible for oversight of the Division of Behavioral Health's referrals and prior authorization for intensive inpatient treatment for adults and adolescents, inpatient and residential services for pregnant women and women with dependent children, and intensive methamphetamine treatment services. Stacy oversees the Intensive Methamphetamine Treatment programs to ensure compliance with program guidelines, collecting data and outcomes. In this capacity, Stacy provides technical assistance to behavioral health agencies across the state. Stacy also oversees the Medication-Assisted Treatment portion of the indigent medication application process.

**Diana Kramer** has worked in the field of cultural diversity and inclusion for more than 15 years, providing support and oversight of system-wide and region-specific initiatives, program enhancement, policy improvement, trauma-informed care, training, and workforce development for the purposes of ensuring culturally and linguistically appropriate service standards for individuals accessing and receiving physical and behavioral health services. As a consultant on health equity and diversity inclusion practices, her focus is on improving the lives of individuals, children, and families with an emphasis on Native American traditional healing, wellness practices, and the delivery of comprehensive culturally adaptive treatment services. Additional concentrations include integration of physical, mental, and behavioral services for overall health and wellness of the whole person. Her passion is advocating

for under-represented populations with the goal of eliminating health disparities. She is currently pursuing a Doctor of Behavioral Health at Arizona State University.

**Margaret Lloyd, Ph.D.** is an Assistant Professor at the University of Connecticut, School of Social Work. Dr. Lloyd's research focuses on practice and policy addressing substance use disorders in child welfare, with particular attention to families with young children. Dr. Lloyd has more than six years of experience evaluating family drug treatment courts (FDTC) and currently serves as Principal Investigator of three federally-funded projects researching and evaluating FDTC. Additionally, Dr. Lloyd is investigating the implications of state-level changes to policies requiring child protective services' notification of newborns prenatally exposed to substances. She teaches MSW-level courses on social policy, program evaluation, research, and substance use disorders.

**Mary Jo McMillen**, a woman in recovery since 1985, is the Executive Director of Utah Support Advocates for Recovery Awareness (USARA), a peer-run Recovery Community Organization that celebrates, advocates, supports, and empowers people in all stages of addiction recovery. She is a Licensed Substance Use Disorder Counselor, and for 30 years has been dedicated to helping individuals and family members cope with substance use and addiction and how to live a life in recovery. Mary Jo is passionate about the growth of peer-delivered recovery support services in local communities where they are readily available for people seeking help. She credits her amazing USARA team of Peer Recovery Coaches, Family Support Coaches, and volunteers who collaboratively work with community leaders, treatment providers, healthcare clinics, emergency departments, hospitals, public health agencies, criminal justice system, and the general public to

# SPEAKER BIOS

help people connect with resources they need to support recovery from substance use disorders.

**Sam Minsky**, MA, LMFT, was a Senior Clinician, Trainer, and Supervisor at ClareMatrix (formerly known as the Matrix Institute on Addictions). He has served in various clinical and executive capacities such as Senior Clinician, Associate Director, and Director of the full service outpatient substance abuse clinic at Matrix West Los Angeles. Most recently, he is now serving as one of the National and International Matrix Model Trainers, Supervisors, and Consultants at ClareMatrix. Mr. Minsky has worked in the chemical dependency field since 1988. He is a licensed Marriage and Family Therapist in the state of California and a specialist in treating people with substance use disorders and their families. He has also worked for the Brooklyn New York Criminal Court System as an expert witness in chemical dependency and substance use.

**Susan Nichols** is a Child and Family Program Specialist with the Children's Bureau and works out of the Region 8 office. She has 21-plus years' of experience in all areas of the child welfare field.

**Ruth Paris**, Ph.D., LICSW is an Associate Professor of Clinical Practice at Boston University School of Social Work where she serves as the Chair of the Clinical Practice Department. At BUSSW, she teaches courses on clinical practice with families, trauma in early childhood, and clinical research methods. Her program of research focuses on attachment-based interventions for vulnerable families with young children. With support from SAMHSA, DOD, NIH, HRSA, and private foundations, she has developed and evaluated multiple interventions implemented in a variety of community settings focused on families at risk. These include mothers with substance use disorders and their children, immigrant/refugee

mothers and young children with trauma histories, women with postpartum depression and their infants, and post-deployment military families. Dr. Paris is a graduate of Smith College (MSW) and the University of California, Berkeley (PhD).

**Ed Parsells** is an enrolled member of the Cheyenne River Sioux Tribe. He is the Clinical Director for the Rosebud Sioux Tribe Methamphetamine Rehabilitation Program in Rosebud, South Dakota. He previously served as the Director for the Rosebud Sioux Tribe's Piya Mani Otipi adolescent residential treatment program for eight years. Ed received his Behavioral Science degree from Mid-America University in Oklahoma City, Oklahoma. He is a South Dakota licensed addiction counselor (LAC). Ed co-authored the South Dakota Statewide Native American Substance Abuse Needs Assessment. He administered an Indian Health Services grant that mobilized community response teams on 19 reservations to address fetal alcohol spectrum disorders (FASD). He serves as the National American Indian and Alaska Native ATTC South Dakota Native American Curriculum Committee chair and is a master trainer of the curriculum. He served as charter chairman of the Great Plains American Indian Credentialing Board. Ed served as coordinator for a NARCH prevention research grant focused on developing a program to address adolescents who are depressed and at high risk to develop type II diabetes. He also authored an equine therapy physical exercise program. Ed developed a Lakota Values Equine-Assisted Counseling Program based on the "Seven Direction Model" that he also authored. The "Seven Direction Model" is a culture-based substance use treatment model. The model incorporates traditional Lakota culture, an adaptation of Motivational Interviewing, RECBT, and Lakota values.



# SPEAKER BIOS

**Beth A. Rutkowski** received her Master of Public Health degree, with an emphasis on epidemiology and quantitative methods, from the University of Medicine and Dentistry of New Jersey, School of Public Health. She has been associated with UCLA's Integrated Substance Abuse Programs (ISAP) since December 2000 and currently serves as the Associate Director of Training and Co-Director of the SAMHSA-supported Pacific Southwest Addiction Technology Training Center. The majority of Ms. Rutkowski's time is focused on the development of synchronous and asynchronous training and intensive technical assistance packages based on evidence-based substance use disorder research and targeted to the community at large. In addition, she organizes and conducts conferences and trainings throughout the Pacific Southwest region (HHS Region 9, covering AZ, CA, HI, NV, and the six U.S. Affiliated Pacific Jurisdictions) on scientifically validated interventions and topics. Ms. Rutkowski is a NIATx-certified process improvement coach, and has directed several statewide, regional and local process improvement change project initiatives. Ms. Rutkowski has co-authored and edited numerous peer-reviewed research articles, book chapters, special issues, and technical reports on treatment evaluation, research-practice partnerships, process improvement strategies for use in substance use disorder and mental health treatment programs, prescription drug misuse, the epidemiology of methamphetamine and crack cocaine abuse, synthetic drugs, process improvement strategies to improve client engagement and retention in treatment, SBIRT, HIV and substance use, medication-assisted treatment, best practices in addiction treatment, and local, national, and international drug trends.

**Darlene Schulz's** degree is in Elementary Education yet her extensive knowledge of substance use

disorder and recovery came from the lived experience of family members. She began her journey with USARA as a participant in the CRAFT family support group in 2010 and continues to facilitate weekly groups using CRAFT. As Program Coordinator she provides training for volunteers interested in learning the CRAFT peer group model and manages 17 CRAFT groups in 10 counties throughout Utah. She has trained new facilitators in New Jersey, Colorado, Nevada, and Texas, where the CRAFT group model is now being implemented. Darlene is a wife, mother, and a proud grandma. She lost her son, Adam, to an overdose in 2012 at 22 years old, yet continues to change the hearts and minds of people with negative perception toward substance use disorders. She has proven herself to USARA through her deep commitment to the CRAFT Program.

**Maridee Shogren** is a Clinical Associate Professor at the University of North Dakota and Certified Nurse-Midwife in clinical practice at Valley Community Health Centers in Grand Forks, ND. Dr. Shogren has extensive knowledge regarding rural health systems; women's health, pregnancy, and breastfeeding; SBIRT; and interprofessional education. She has practiced as a nurse-midwife in a variety of settings where she shares her passion for women's health with her colleagues and her patients. Dr. Shogren has been a regional nurse consultant with the Frontier Regional FASD Training Center and has developed, implemented, and evaluated educational curricula regarding FASD prevention. Dr. Shogren has been involved in SAMHSA-funded grant work at UND since 2014, where she spent three years on the interprofessional SBIRT training grant and most recently began work on the Region 8 Mountain Plains Addiction Technology Transfer Center and the Mountain Plains Mental Health Technology Transfer Center grant teams.

# SPEAKER BIOS

**Marcela Smid, MD, MA, MS**, is an Assistant Professor at the University of Utah Department of Obstetrics and Gynecology, Division of Maternal Fetal Medicine. She is board certified in both Maternal Fetal Medicine and Addiction Medicine. She is the clinical director of the Substance Use & Pregnancy – Recovery, Addiction, Dependence (SUPeRAD) specialty prenatal clinic for pregnant and postpartum women with substance use. She is an NIH Women’s Reproductive Health Research K12 scholar. Her research focus is on substance use and pregnancy and implementation/effectiveness research in care models for pregnant and postpartum women with substance use disorders.

**Deborah Smith** earned her bachelor’s degree and MSW from the University of Oklahoma, School of Social Work. Immediately after graduation, she started employment with the Oklahoma Department of Human Services as a child welfare specialist, serving a total of 17 years and eventually becoming the Child Welfare Services Director from 2010 – 2014. Ms. Smith currently serves as the Regional Program Manager for the Children’s Bureau, Region 7 office out of Kansas City, MO. She is responsible for oversight and monitoring of state and tribal child welfare programs in Iowa, Kansas, Missouri, and Nebraska. She and her husband moved to Kansas City in November 2014, where she discovered new interests such as jazz music and loft-living in a hip area of KC. She and her husband have five amazing grown children, four precious grandchildren and another on the way.

**Kurt Smith** is a native Oregonian and a Coos County resident for 45 years. After 16 years in customer service in the grocery business, he became a welder in the marine fabrication industry. He is currently working as an addiction counselor for Bay Area First Step, a local non-profit, peer-run

organization, which provides alcohol- and drug-free housing and recovery support services in Coos Bay and North Bend, Oregon. He is in recovery from substance use disorder and has lived experience with addiction to illicit drugs including opioids and involvement with the criminal justice system. In his recovery, following a period of incarceration, he went back to college and graduated from Oregon State University and is now enrolled in a master’s degree program online at WGU. He finds his work with individuals early in their recovery from substance use very rewarding and considers the purpose of inspiring hope, which he found in the role of recovery mentor, to be the greatest motivation to continue in this field. To be a part of someone’s miracle of transformation is a special honor and he is so amazed at his life today when compared to the former despair and hopelessness of addiction.

**Michele Tilotta, MPA, BSN, RN**, works for the Iowa Department of Public Health and is a registered nurse with 34 years’ experience in nursing, including medical and behavioral health, quality improvement, management, managed care, and public health experience. Michele graduated from the University of Graceland (Iowa) with a Bachelor in Nursing Degree and from Drake University (Iowa) with a Masters of Public Administration, emphasis in HealthCare Administration. Michele currently works in the Division of Behavioral Health, Bureau of Substance Abuse, and has held various positions at the Department. Michele currently is the Substance Abuse Treatment and Prevention Block Grant and Synar Manager.

**Jade Woodard** has served as the Executive Director of Illuminate Colorado since its inception in 2015, following seven years as the Executive Director of its founding partner agency, the Colorado Alliance for Drug Endangered Children. Prior to this work, she provided family support services in a variety

# SPEAKER BIOS



of settings to families impacted by homelessness, domestic violence, and substance use disorders. Jade has a Bachelor's Degree in Social Work and a Master's Degree in Public Administration. She is responsible for all program and financial oversight, including staff and contractor management, adherence to timelines, and accomplishment of goals and objectives. Jade capitalizes on her collaborative nature and strong communication skills to ensure successful project execution and sustainability. As the Executive Director of Illuminate Colorado, she has participated in and led many state level initiatives related to substance use, child maltreatment, child maltreatment prevention, public awareness, and collaborative community approaches.

these programs and serving as a consultant to various states, counties, tribes, communities, and foundations on behalf of the children, parents, and families affected by substance use and mental disorders involved in the child welfare and judicial systems. Dr. Young is a graduate of California State University Fullerton and received her M.S.W. and her Ph.D. from the University of Southern California, School of Social Work.

**Nancy K. Young** is the Executive Director of Children and Family Futures (CFF), a California-based research and policy institute whose mission is to improve safety, permanency, well-being, and recovery outcomes for children, parents and families affected by trauma, substance use and mental disorders. CFF operates a number of evaluation and technical assistance programs. Since 2002, she has served as the Director of the federally-funded National Center on Substance Abuse and Child Welfare and the Director of the Administration on Children and Families technical assistance program for the Regional Partnership Grants since 2007. In 2010, she began serving as the Director of the Office of Juvenile Justice and Delinquency Prevention's technical assistance program for Family Drug Courts and the Statewide System Reform Program in 2014. She led the effort to create the foundation-funded Prevention and Family Recovery Program to implement evidence-based parenting and children's intervention in family drug courts in 2013. In addition, Dr. Young has been involved in numerous projects related to public policy analysis, strategic planning and program evaluation through her work with

# AGENDA AT A GLANCE

Sunday May 5, 2019

4:30 – 6:30 pm Early check-in  
(1st floor, Palisades II & III Room)

## Monday May 6, 2019 Methamphetamines: Child Welfare Impact and Response

7:30 - 8:30 am Check-in  
(1st floor, Palisades Room)

6:45 - 8:30 am Continental Breakfast  
(1st floor, Restaurant Terrace)

8:30 – 8:45 am WELCOME

8:45 – 9:30 am PRESENTATION:  
**Building Powerful Collaborations for Families Affected by Substance Use Disorders**, Nancy Young, Ph.D.

9:30 – 10:30 am PRESENTATION:  
**Advancing Practice with Parents and Caregivers Impacted by Methamphetamine Use**, Jade Woodard, MPA

10:30 – 10:45 am BREAK

10:45 – 11:45 am PRESENTATION:  
**Examining the Role of Methamphetamine in Permanence: Issues that Impact Reunification, Guardianship, and Adoption**, Margaret H. Lloyd, Ph.D.

11:45 – 1:15 pm LUNCH  
PRESENTATION: **Methamphetamine Use: Current Trends, Impact on the Brain, and Implications for Treatment and Recovery**, Beth Rutkowski, MPH

1:15 – 2:00 pm PRESENTATION: **An Update of the MATRIX Model Including Medication-Assisted Treatment (MAT) for Opioid Use Disorder**, Sam Minsky, MA, LMFT

2:00 – 2:15 pm BREAK

2:15 – 3:30 pm PANEL DISCUSSION:  
**Evidence-Based Treatment Practices for Substance Use Disorder and Child Welfare Practitioners: Working in Tribal Communities**; Sara DeCoteau, Sean Bear, BA, Ed Parsells, LAC, Beth Rutkowski, MPH, Sam Minsky, MA, LMFT

3:30 – 4:30 pm PRESENTATION:  
**The Power of Peers: Peer Recovery Support Models for Child Welfare-Involved Families**, Kurt B. Smith, CADC II, CRM and Cari Debban, CRM, CADC I

4:30 – 5:00 pm CLOSING

## Tuesday May 7, 2019 Bring Them All: Interdisciplinary Approaches to Family-Centered Care

8:00 – 8:30 am Check-in  
(10th floor, Skyline Room)

7:00 - 8:30 am Continental Breakfast  
(1st floor, Restaurant Terrace)

8:30 – 9:00 am WELCOME

8:40 – 9:15 am PRESENTATION:  
**Adverse Childhood Experiences**, Heidi Heitkamp, JD, Former United States Senator

9:15 – 10:15 am PRESENTATION:  
**Trauma-Informed and Culturally Sensitive Care for Families**, Karina Forrest-Perkins

10:15 – 10:30 am BREAK

10:30 – 11:30 am SPECIAL TOPIC:  
**Families First Opportunities**, Marilyn Kennerson and Deborah Smith

11:30 – 12:45 pm  
LUNCH PRESENTATION:  
**Pregnancy and Parenting in the Midst of a Methamphetamine Epidemic**, Marcela Smid, MD, MA, MS

12:45 – 2:15 pm PANEL DISCUSSION:  
**Policy Approaches to Support Family-Centered Care**; Michele Tilotta, MPA, BSN, RN, SABG, Stacy Krall, MS, LAC, Karina Forrest-Perkins, Susan Nichols, Nancy Young, Ph.D.

Facilitator: **Charlie Smith, Ph.D., SAMHSA RA Region VIII, DHHS**

2:15 – 2:30 pm BREAK

2:30 – 3:45 pm PANEL DISCUSSION:  
**Family-Centered Housing Strategies**; Tammie Denning, James Glenn, MSW, Karina Forrest-Perkins, Kimberly Craig, Kurt B. Smith, CADC II, CRM, Cari Debban, CRM, CADC I

3:45 – 4:45 pm PANEL DISCUSSION:  
**Pregnancy as an Opportunity for Intervention**; Sharon Hesseltine, BSW, Ruth Paris, PhD, Maridee Shogren, DNP, CNM, Marcela Smid, MD, MA, MS

4:45 – 5:00 pm WRAP-UP

## Wednesday, May 8, 2019 Bring Them All: Interdisciplinary Approaches to Family-Centered Care

8:00 – 8:30 am Check-in  
(10th floor, Skyline Room)

7:00 - 8:30 am Continental Breakfast  
(1st floor, Restaurant Terrace)

8:30 – 9:00 am WELCOME

9:00 – 10:15 am PRESENTATION:  
**Engaging Fathers More Effectively**, Dan Griffin

10:15 – 10:30 am BREAK

10:30 – 11:30 am PANEL

DISCUSSION: **Prevention and Recovery Supports for the Whole Family**; Sharon Hesseltine, BSW, Dan Griffin, Ruth Paris, PhD, Mary Jo McMillen, Darlene Schultz

11:30 – 12:00 pm LUNCH

12:00 – 12:30 pm PANEL DISCUSSION:  
**Example Innovators from the Family-Centered Care Learning Collaborative**; Heather Bird, Monica Meier, Susan Montague, Amanda Pfannenstiel, Paige Edgington, Andy Smith

12:30 – 1:45 PM EXPO TABLE  
DISCUSSIONS: **Implementing Family-Centered Care Innovation**

1. Persons with Lived Experience and Trauma-Informed Care
2. Implementing Family-Centered Clinical Practices
3. Family Housing Strategies
4. Prevention and Recovery Supports
5. Engaging Fathers & Family

1:45 – 2:00 pm CLOSING