



Mountain Plains ATTC (HHS Region 8)

ATTC

Addiction Technology Transfer Center Network
Funded by Substance Abuse and Mental Health Services Administration



Network Coordinating Office

ATTC

Addiction Technology Transfer Center Network
Funded by Substance Abuse and Mental Health Services Administration

NATIONAL
Center on
Domestic Violence, Trauma & Mental Health

STARTING THE CONVERSATION

– Substance Use Disorders
and Intimate Partner Violence

Panel Discussion on Substance Use, Intimate Partner Violence and Substance Use Coercion

*A Product of Mountain Plains Addiction Technology Transfer Center, Addiction
Technology Transfer Center Network Coordinating Office, and the National Center
on Domestic Violence, Trauma & Mental Health*

The Webinar Is Now Live



- This webinar is being recorded and will be available for future viewing along with a copy of today's slides.
- The slides are shared in the chat feature

Technical Information

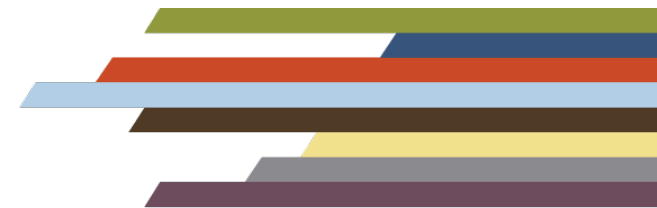


- This webinar is being recorded and archived and will be available to all webinar participants.
- Audio will stream through your computer or device
 - If you prefer to call in, the phone numbers are included in your registration confirmation.
- If you are experiencing technical difficulties, please be sure that your audio is properly connected via phone or computer. Calling in through your phone may be helpful.

Chat and Q&A



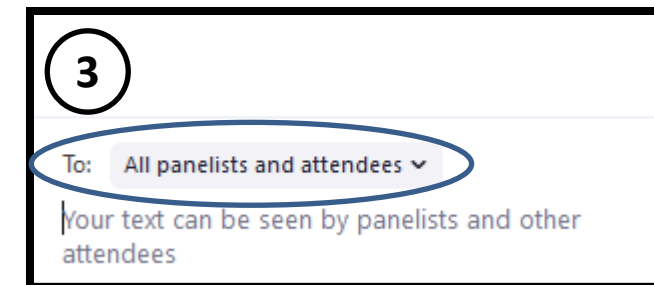
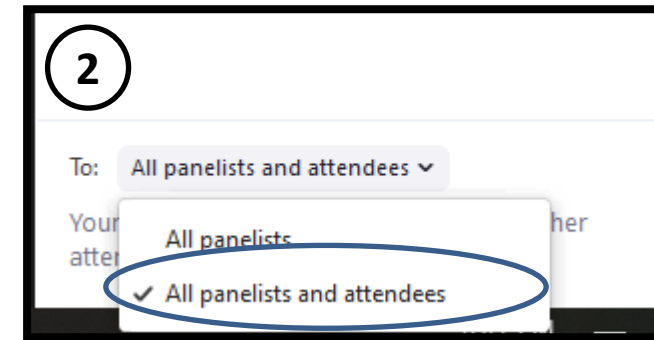
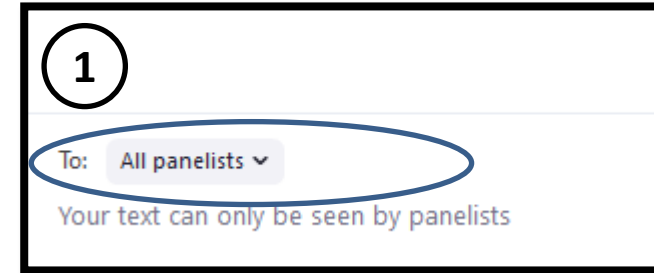
- We welcome your thoughts and hope for a rich conversation using the chat box feature.
- You may also type questions for our presenters at any time during the presentation in the **Q & A feature**.
- We have dedicated time at the end of the presentation to answer questions brought up through the **Q & A feature**.



Chatting in Zoom Webinar

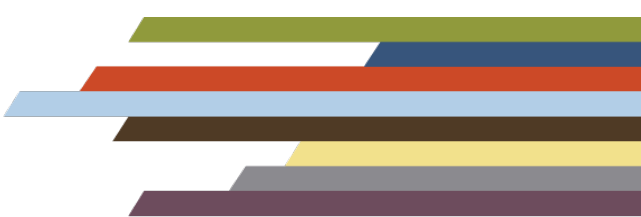
To ensure all attendees see your comment or question please do the following:

1. Go to “To:” at the bottom of the chat feature
2. Select the down arrow next to “All Panelists”
3. **Select “All panelists and attendees”**
4. The bottom should now read To: All panelists and attendees



Overview

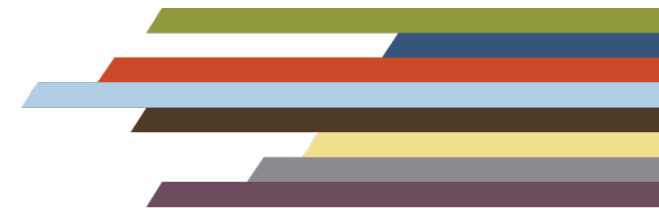


- **Introduction of Centers**
 - Addiction Technology Transfer Center Network Coordinating Office
 - Addiction Technology Transfer Center Mountain Plains (Region 8)
 - National Center on Domestic Violence, Trauma & Mental Health
 - **Clarifying the relationship between Substance Use Disorder (SUD) and Intimate Partner Violence (IPV)**
 - **Panel Discussion**
 - Including questions from registration
 - **Q&A Session**
 - **Resource Product**
- 

Objectives for today's webinar



- Identify resources to address substance use disorder (SUD) and intimate partner violence (IPV)
- Identify common concerns and barriers survivors face
- Identify actionable steps or resources to address those barriers
- Understand the relationship between Substance Use Disorder (SUD) and Intimate Partner Violence (IPV)



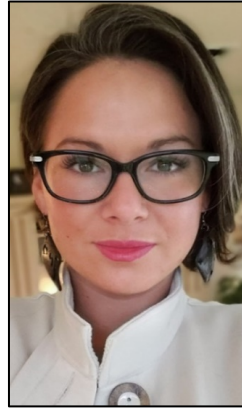
Today's Panelists



Carole Warshaw, MD
Director of the
NCDVTMH



Gabriela Zapata-Alma
LCSW, CADC
Director of Policy and
Practice on Domestic
Violence and Substance Use
at the NCDVTMH



Christina Love
Senior Specialist for Alaska
Network on Domestic
Violence & Sexual Assault



Tracy A. Evanson
PhD, RN, PHNA-BC
Professor at University of
North Dakota
Mountain Plains ATTC

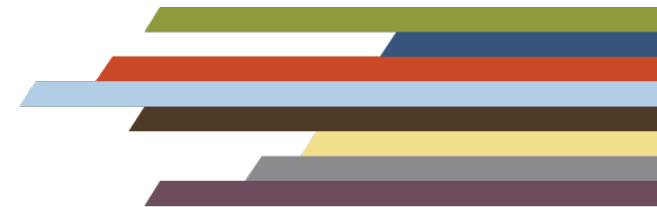


Thomasine Heitkamp
LCSW
PI and Co-Director of
Mountain Plains ATTC

Moderator:



Lisa Carter, LPC, LCAC is a Technology Transfer Specialist with the Mid-America Addiction Technology Transfer Center



Land Acknowledgement

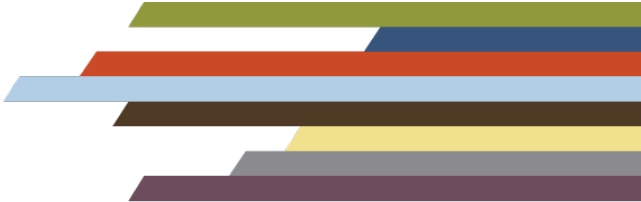


- A **land acknowledgement** is a formal statement that recognizes the unique and enduring relationship that exists between Indigenous Peoples and their traditional territories.
- To recognize the land is an expression of gratitude and appreciation to those whose territory you reside on, and a way of honoring the Indigenous people who have been living and working on the land from time immemorial. It is important to understand the long-standing history that has brought you to reside on the land, and to seek to understand your place within that history.
- Land acknowledgements do not exist in a past tense, or historical context: colonialism is a current ongoing process, and we need to build our mindfulness of our present participation.
- We would like to acknowledge the ancestral lands where each of us are standing and coming from in today's presentation. Feel free to also do so in the chat for your locations.
- Land Acknowledgement Website: <https://native-land.ca/>

<https://native-land.ca/resources/territory-acknowledgement/>

<http://convention.myacpa.org/houston2018/centering-land-importance/>

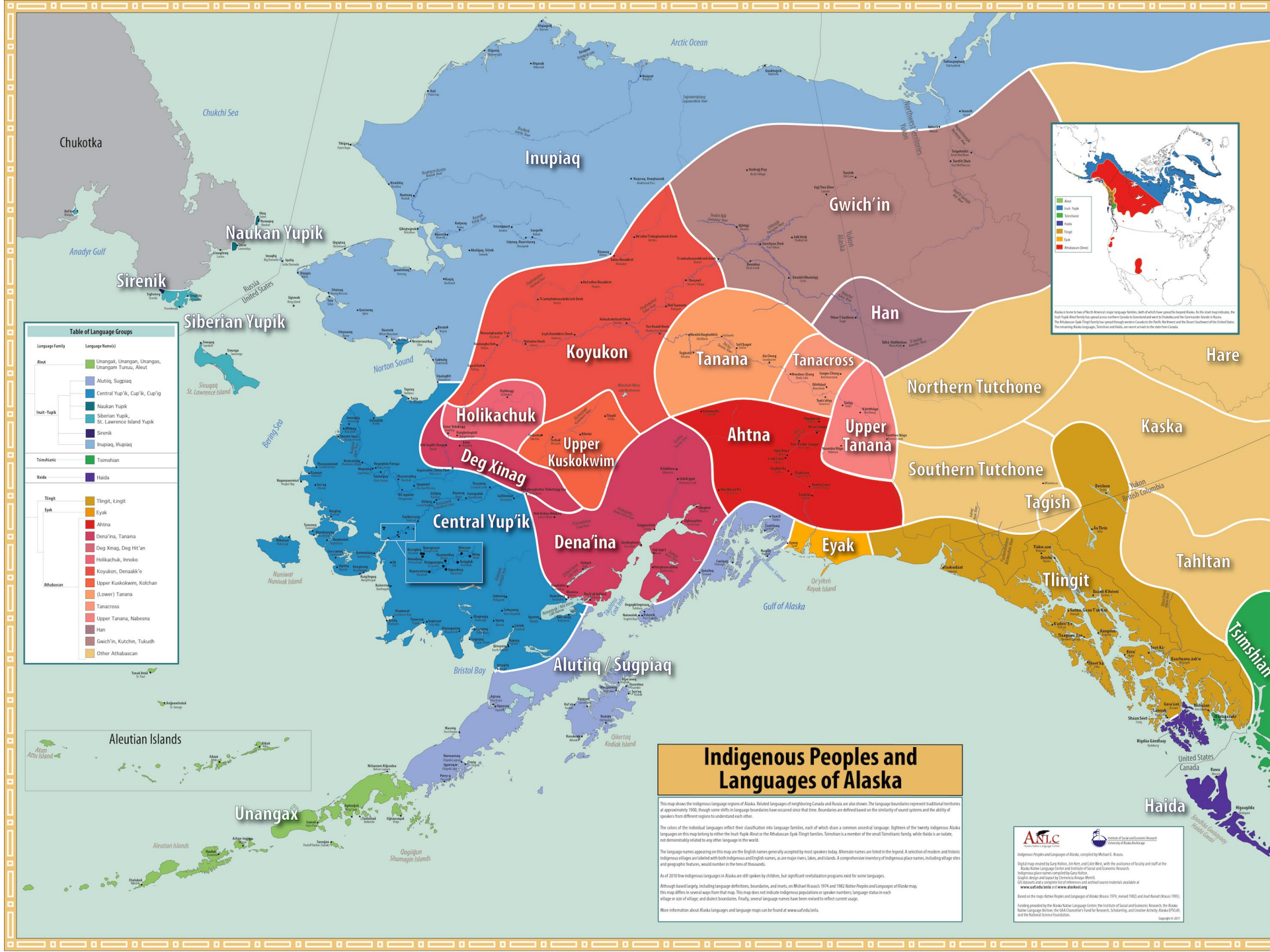
<http://www.lspirg.org/knowtheland/>



Text your zip code
or your **city** and
state (separated
by a comma) to:

1-855-917-5263

A bot will
respond with the
names of the
Native lands that
correspond to
that region.

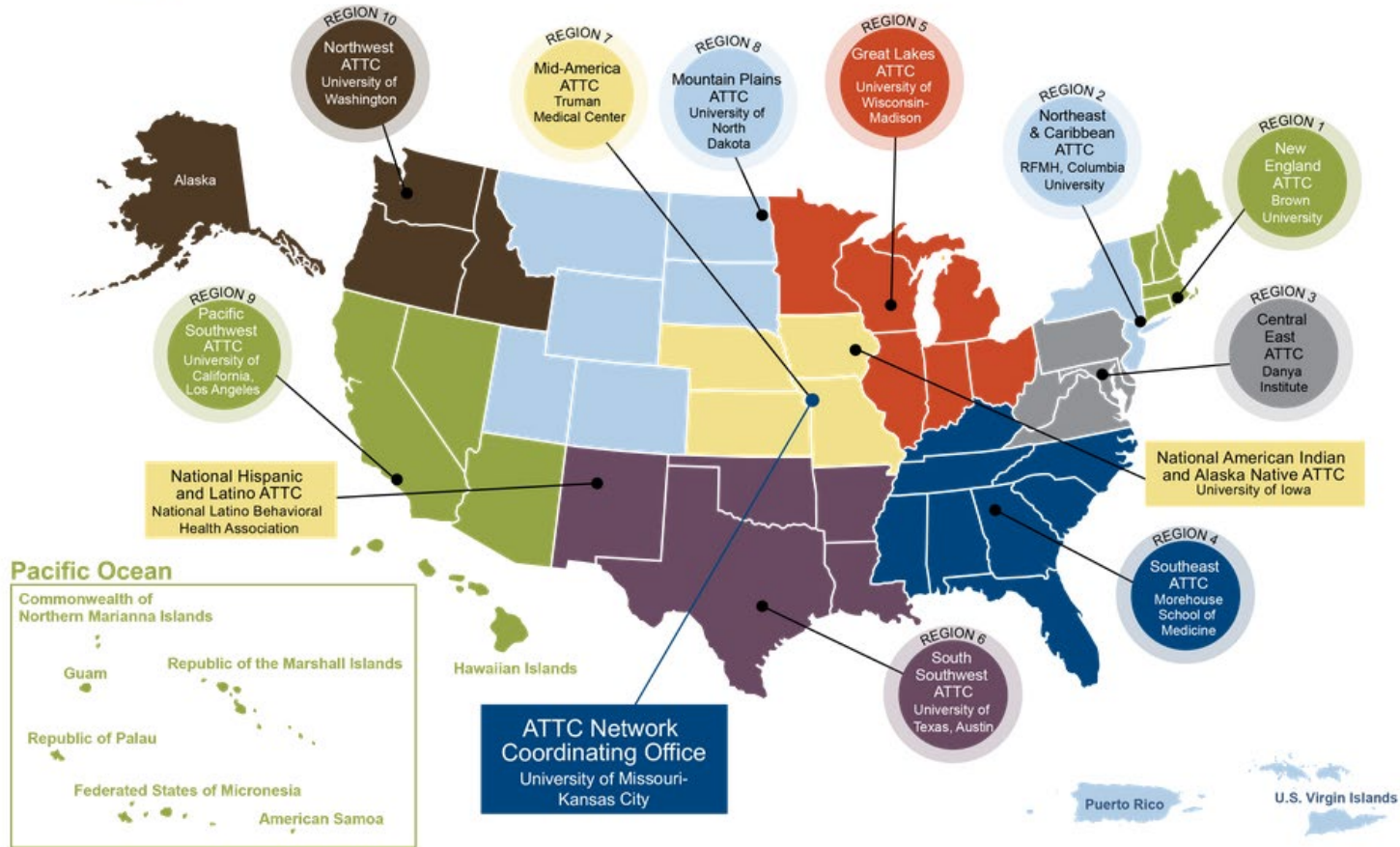


ATTC Network



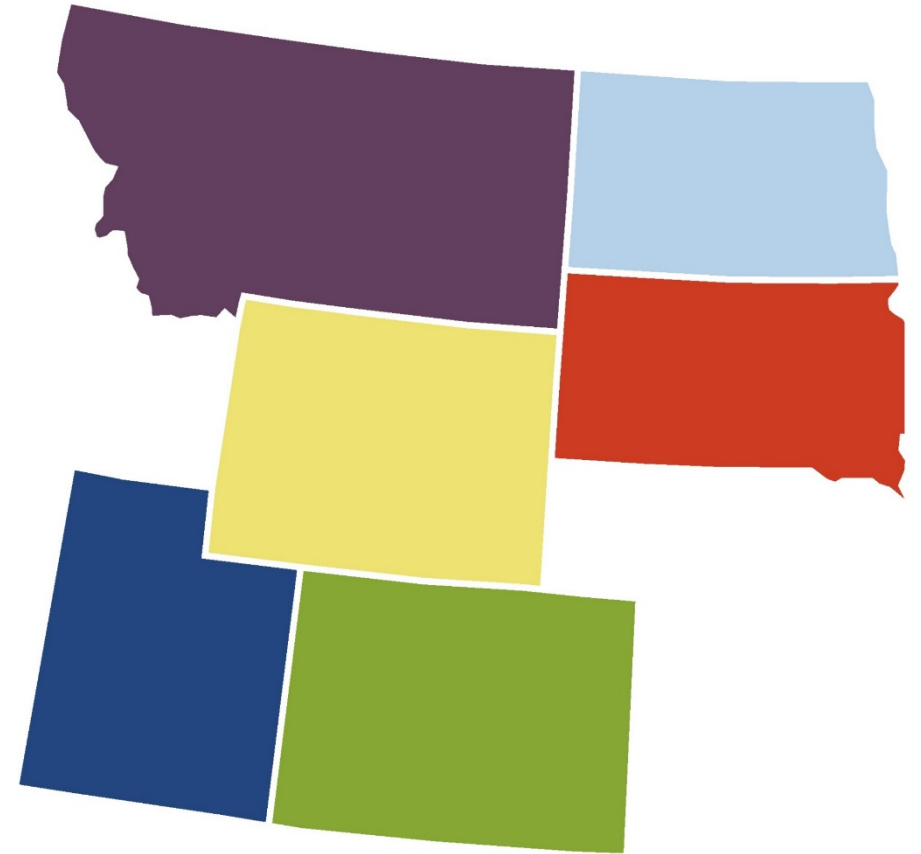
ATTC Addiction Technology Transfer Center Network
Funded by Substance Abuse and Mental Health Services Administration

U.S.-based ATTC Network



Mountain Plains ATTC (Region 8)

The Mountain Plains Addiction Technology Transfer Center (Mountain Plains ATTC) provides training and technical assistance to individuals who serve persons with mental health and substance use concerns throughout Region 8 (Colorado, Montana, North Dakota, South Dakota, Utah and Wyoming).



ATTC Network



The use of affirming language inspires hope and advances recovery.

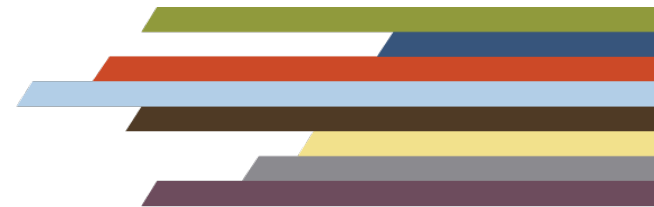
LANGUAGE MATTERS.

Words have power.

PEOPLE FIRST.



The ATTC Network uses affirming language to promote the promises of recovery by advancing evidence-based and culturally informed practices.



National Center on Domestic Violence, Trauma & Mental Health

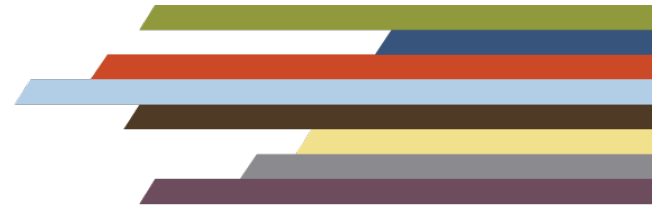


U.S. DHHS Administration on Children, Youth and Families, Family and Youth Services Bureau, Family Violence Prevention and Services Program:

Special Issue Resource Center Dedicated to Addressing the Intersection of Domestic Violence, Trauma, Substance Use, and Mental Health

- Comprehensive Array of Training & Technical Assistance Services and Resources
 - Research and Evaluation
 - Policy Development & Analysis
 - Public Awareness
- 

What are the connections between substance use, trauma, and IPV?



Survivors of IPV experience high rates of substance use and IPV is highly prevalent among women accessing substance use disorder treatment

Victimization by an intimate partner increases one's risk for depression, PTSD, substance use and suicidality

3x

PTSD, Major depressive disorder, Self-harm

4x

Suicide attempts

6x

Substance use disorder

High rates of DV among women accessing substance use disorder treatment

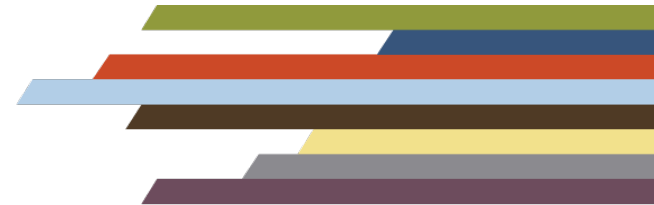
47%-90%

Report DV in their lifetime

31%-67%

Report DV in the past year

Less well recognized are the ways people who abuse their partners engage in coercive tactics targeted toward a partner's mental health or use of substances....



Substance Use Coercion

National Domestic Violence Hotline & NCDVTMH Survey

N = 3,224

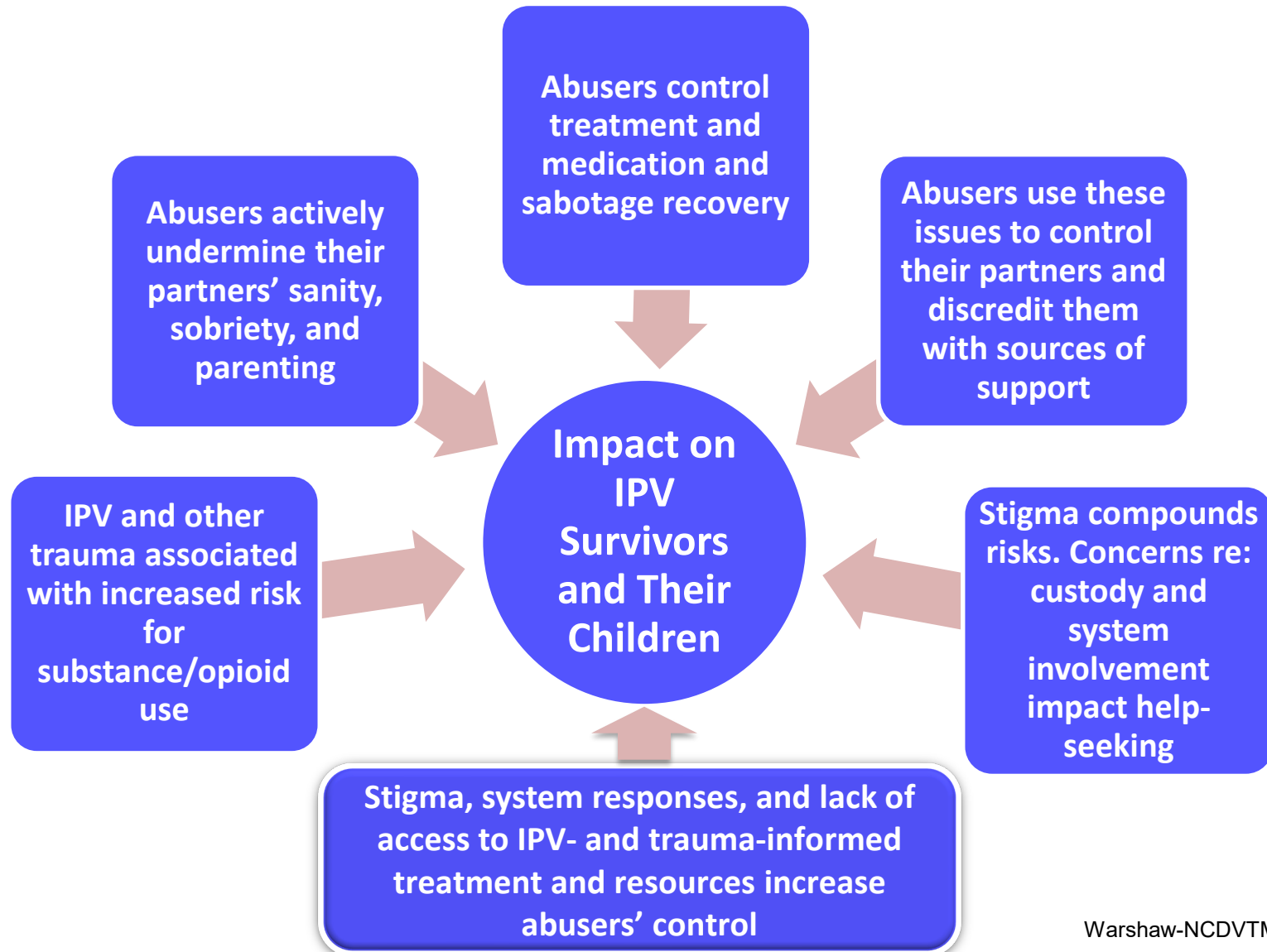
- 26% ▪ **Ever used substances to reduce pain** of partner abuse?
- 27% ▪ **Pressured or forced to use** alcohol or other drugs, or made to use more than wanted?
- 15.2% ▪ **Tried to get help** for substance use?
- 60.1% ▪ **If yes, partner or ex-partner tried to prevent or discourage you from getting that help?**
- 37.5% ▪ **Partner or ex-partner threatened to report** alcohol or other drug use to someone in authority to keep you from getting something you wanted or needed?
- 24.4% ▪ **Afraid to call the police** for help because partner said they wouldn't believe you because of using, or you would be arrested for being under the influence?

Substance Use Coercion Survey

Qualitative Findings

- **Coerced use:** Introduced by partner; Pressured to use with partner and unable to refuse; Manipulated, threatened or forced into using; Drugged
- **Treatment Interference and Recovery Sabotage:** Prevented from attending treatment/meetings; Harassed into leaving Tx; Medications controlled; Transportation/childcare withheld; Substances kept in home after treatment; Forced to watch partner use; Escalating violence if tried to cut down or stop
- **Blaming Abuse on Partner's Substance Use** and benefiting from stigma and lack of access to services
- **Threats to Report or Discredit:** Reported to judges, police, probation officers, CPS, employers; False allegations; Videotaping
- **Opioid Specific:** Control supply; entrap in relationship; threaten with withdrawal; coerce into illegal activities; prevent from meeting CPS/Court requirements and accessing benefits

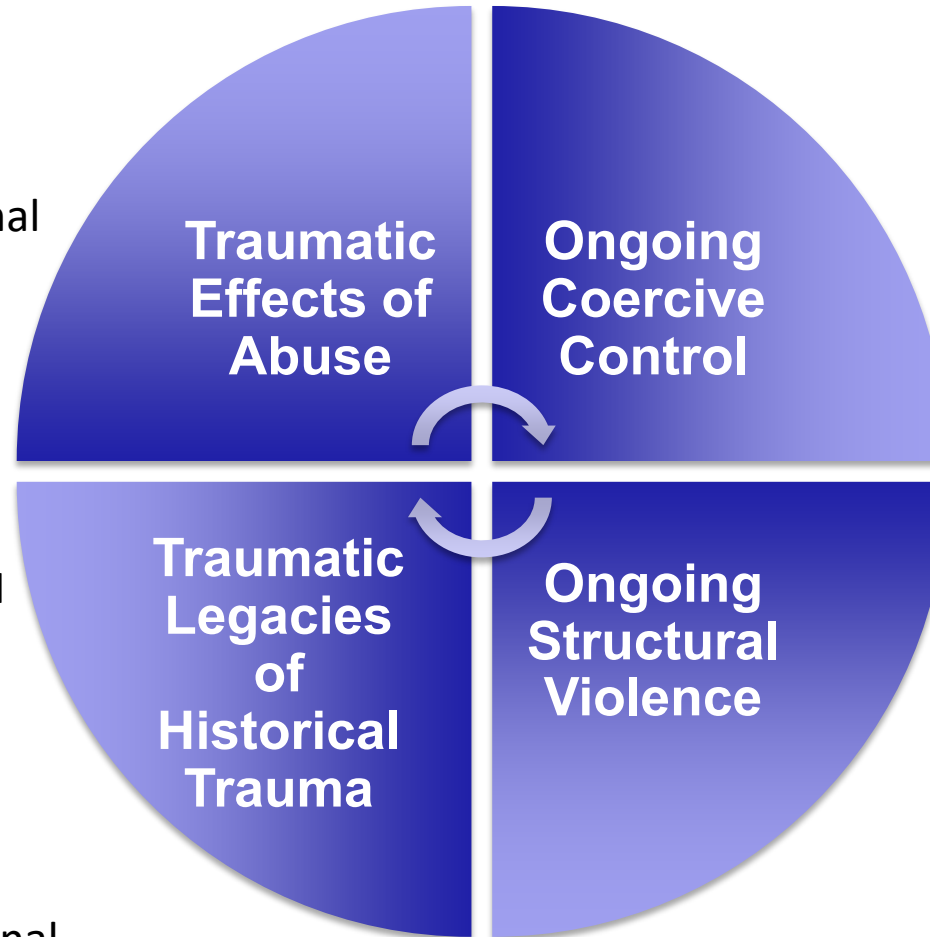
Trauma, IPV, and Substance Use Coercion: Complex Picture



Trauma. Substance Use, and IPV in a Broader Social Context

- Health
- Mental Health/Suicide
- Substance Use
- Intergenerational
- Interpersonal
- Economic

- Health and MH
- Economic
- Social
- Cultural and Spiritual
- Environmental
- Transgenerational



- Undermining Sanity and Sobriety
- Jeopardizing health and wellbeing
- Controlling Access to Resources

- Policies that perpetuate structural violence & discrimination

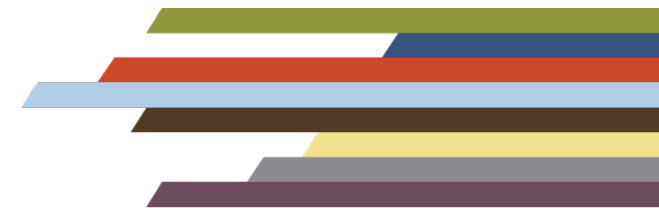
Themes and Recommendations

Key Informant Conversations and U.S. DHHS Technical Expert Meeting on SU Coercion: Issues to Consider



- **Address Service and System Barriers**
- Support Integrated Approaches
- Incorporate Responses to IPV and SU Coercion into Clinical Practice

- Promote Cross-Sector Collaboration
- Incorporate into Opioid Initiatives
- Support Research on SU Coercion
- **Center the Voices of Survivors**



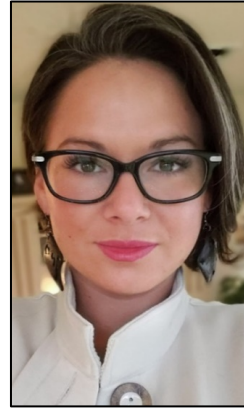
Panelist Discussion



Carole Warshaw, MD
Director of the
NCDVTMH



Gabriela Zapata-Alma
LCSW, CADC
Director of Policy and
Practice on Domestic
Violence and Substance Use
at the NCDVTMH



Christina Love
Senior Specialist for Alaska
Network on Domestic
Violence & Sexual Assault



Tracy A. Evanson
PhD, RN, PHNA-BC
Professor at University of
North Dakota
Mountain Plains ATTC

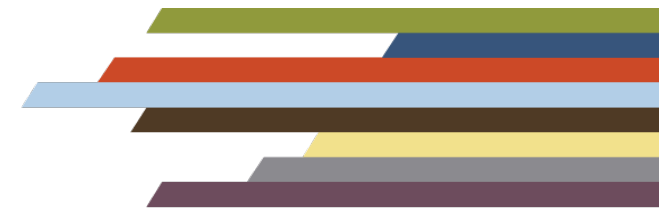


Thomasine Heitkamp
LCSW
PI and Co-Director of
Mountain Plains ATTC

Moderator:



Lisa Carter, LPC, LCAC is a Technology Transfer Specialist with the Mid-America Addiction Technology Transfer Center





Panel Discussion



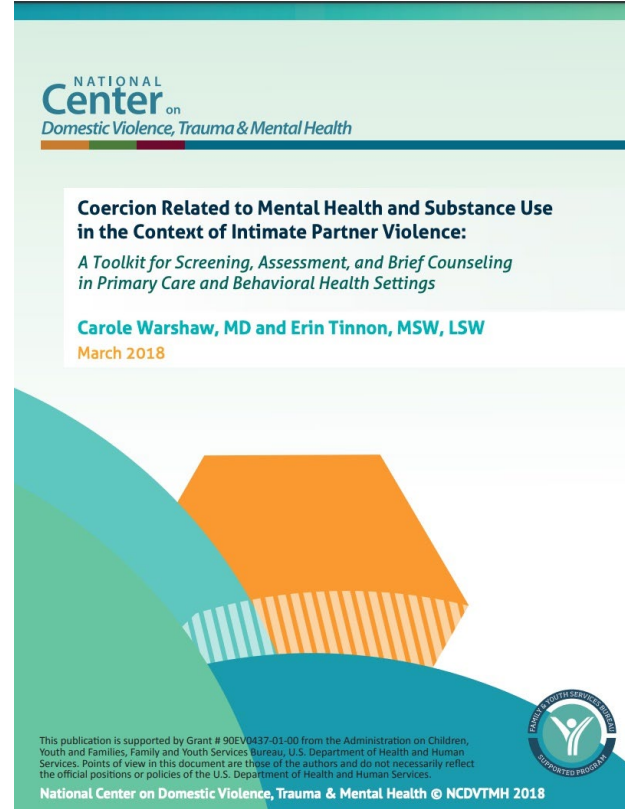
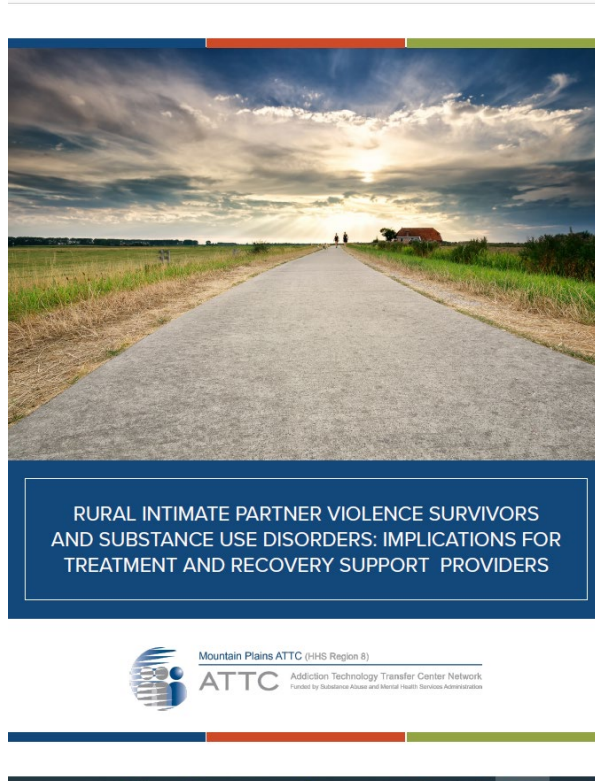


Q&A



Compiled Resources

- ATTC & NCDVTMH Resources for Addressing Substance Use Disorder (SUD) and Intimate Partner Violence (IPV)



03.25.2021

Contact Us



Carole Warshaw, MD

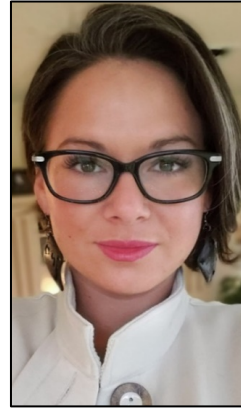
CWarshaw@NCDVTMH.org



Gabriela Zapata-Alma

LCSW, CADC

GZapata.Alma@NCDVTMH.org



Christina Love

Clove@andvsa.org



Tracy A. Evanson

PhD, RN, PHNA-BC

tracy.evanson@und.edu



Thomasine Heitkamp

LCSW

thomasine.heitkamp@und.edu

Webinar Questions: Carissa Ruf: rufc@umkc.edu



NATIONAL
Center on

Domestic Violence, Trauma & Mental Health

Carole Warshaw, MD

Director

CWarshaw@NCDVTMH.org

Gabriela Zapata-Alma, LCSW, CADC

Director of Policy and Practice on Domestic Violence and Substance Use

GZapata.Alma@NCDVTMH.org

More ways to connect

www.nationalcenterdvtraumamh.org/newsletter-sign-up/

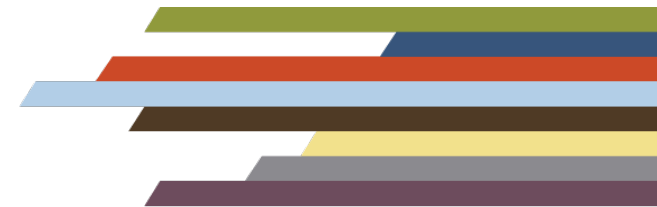
Twitter: [@ncdvtmh](https://twitter.com/ncdvtmh)

Instagram: [@ncdvtmh](https://www.instagram.com/ncdvtmh)

Facebook: www.facebook.com/ncdvtmh

Connect with ATTC

- **ATTC Network Coordinating Office**
 - Website: <https://attcnetwork.org/>
 - Twitter: [@ATTCnetwork](https://twitter.com/ATTCnetwork)
 - Facebook: [@attcNetwork](https://facebook.com/attcNetwork)
 - Newsletter: [ATTC Messenger](#)
- **ATTC Mountain Plains (Region 8):**
 - Website: <https://attcnetwork.org/centers/mountain-plains-attc/home>
 - Twitter: [@MT_Plains_ATTCC](https://twitter.com/MT_Plains_ATTCC)



Disclaimers

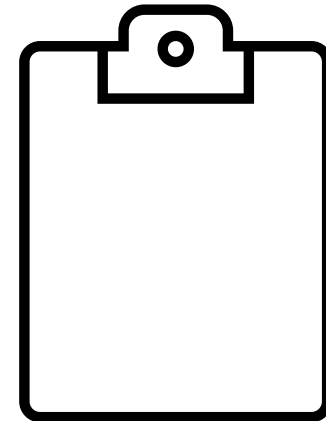
- This presentation was prepared for the Addiction Technology Transfer Center Network Coordinating Office and Mountain Plains Addiction Technology Transfer Center (Mountain Plains ATTC) under a cooperative agreement from the Substance Abuse and Mental Health Services Administration (SAMHSA). All material appearing in this presentation, except that taken directly from copyrighted sources, is in the public domain and may be reproduced or copied without permission from SAMHSA or the authors. Citation of the source is appreciated. Do not reproduce or distribute this presentation for a fee without specific, written authorization from the Addiction Technology Transfer Center(s) involved. For more information on obtaining copies of this presentation please email rufc@umkc.edu
- At the time of this presentation, Tom Coderre served as acting SAMHSA Assistant Secretary. The opinions expressed herein do not reflect the official position of the Department of Health and Human Services (DHHS), or SAMHSA. No official support or endorsement of DHHS, SAMHSA, for the opinions described in this presentation is intended or should be inferred.
- This presentation is supported by funding from the US Department of Health and Human Services, Substance Abuse and Mental Health Services Administration and Health Resources and Services Administration. Its contents are solely the responsibility of the authors and do not necessarily represent the official views of HHS, SAMHSA or HRSA. Information shared and views expressed reflect the speakers' best understanding of science or promising practices and should not be seen as directives. Content related to Privacy and Security and 42 CFR Part 2 presented during these sessions should not be construed as legal advice and participants are directed to discuss recommendations with their agency's legal counsel. Finally, participants should consult SAMHSA resources that provide additional information regarding delivering services virtually.

NCDVTMH is supported by Grant #90EV0437-01-00 from the Administration on Children, Youth and Families, Family and Youth Services Bureau, U.S. Department of Health and Human Services. Points of view in this document are those of the presenters and do not necessarily reflect the official positions or policies of the U.S. Department of Health and Human Services.



Evaluation

- The ATTC is funded through SAMHSA to provide this training. As part of receiving this funding we are required to submit data related to the quality of this event.
- At the end of today's training, you will be directed to a website to complete a complete a brief survey about today's training.



<https://ttc-gpra.org/P?s=907735>