

1



2



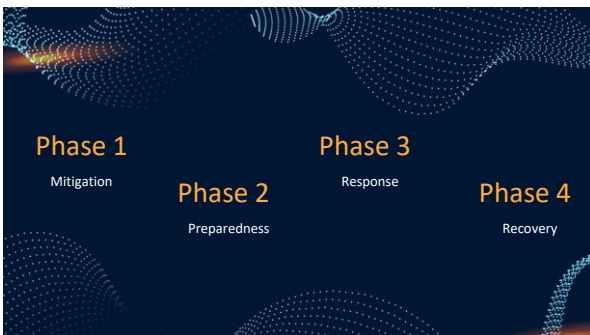
3



4



5



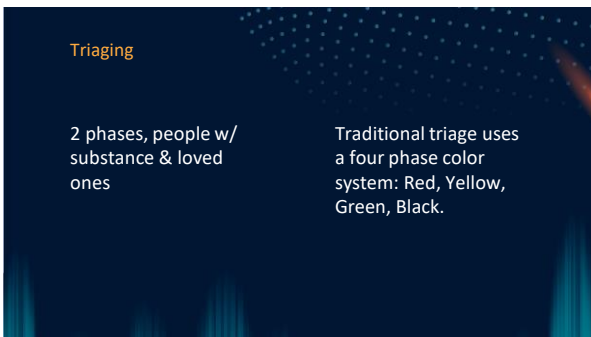
6



7



8



9

Red Triage Tag

1. "Immediate" or T1 or Priority 1
2. Patients whose lives are in immediate danger and who require immediate treatment;
3. Narcan
4. MOUD

10

Yellow Triage Tag

1. "Delayed" or T2 or Priority 2
2. Patients whose lives are not in immediate danger and who will require urgent, not immediate, medical care;
3. Peer Support
4. Long Term Support

11


Green Triage Tag

1. "Minimal" or T3 or Priority 3
2. Patients with minor injuries who will eventually require treatment;
3. Long Term Recovery

12

Black Triage Tag

1. "Expectant" or No Priority
2. Patients who are either dead or who have such extensive injuries that they can not be saved with the limited resources available.
3. Understanding there are limits to what we can do
 - Compassion Fatigue
 - Having referral system handy



13

"Demand for resources always exceeds supply"

World Health Organization



14



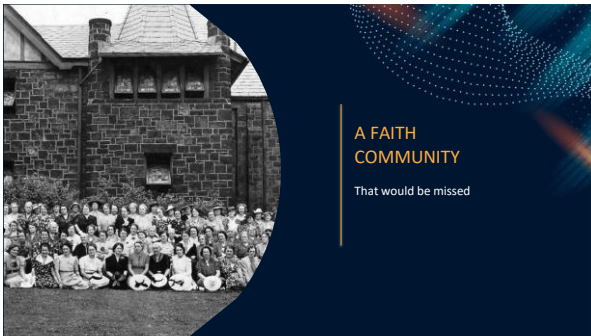
WHO LOVED MORE
Helicopter Mission



15



16



17
