

TUESDAY, OCT. 4

10-11AM PT / 12-1PM CT / 1-2PM ET

Evidence-Based Resource Guide Series

ADAPTING EVIDENCE-BASED INTERVENTIONS FOR UNDER-RESOURCED POPULATIONS



ATTC

Addiction Technology Transfer Center Network
Funded by Substance Abuse and Mental Health Services Administration

SAMHSA

Substance Abuse and Mental Health
Services Administration

Housekeeping Items

- We have made every attempt to make today's presentation secure. If we need to end the presentation unexpectedly, we will follow-up using your registration information.
- Have a question for the speakers? Email ebprc@samhsa.hhs.gov
 - Chat is limited to allow participants to communicate with the host regarding technical questions regarding the Zoom webinar.
- At the end of today's webinar, please complete a brief survey.
- Follow the session, you will receive an email on how to access a certificate of attendance; must attend at least 30 minutes.
- The event is closed captioned!
- Follow us on social media:

@ATTCNetwork on



Please Note:

This session is recorded and all materials will be posted to our website within 2 weeks.

Acknowledgment

This presentation was prepared for the Addiction Technology Transfer Center (ATTC) Network under a cooperative agreement from the Substance Abuse and Mental Health Services Administration (SAMHSA). All material appearing in this publication, except that taken directly from copyrighted sources, is in the public domain and may be reproduced or copied without permission from SAMHSA or the authors. Citation of the source is appreciated. Do not reproduce or distribute this publication for a fee without specific, written authorization from the ATTC Network Coordinating Office. This webinar will be recording and published the ATTC Network website.

At the time of this publication, Miriam E. Delphin-Rittmon, Ph.D, served as Assistant Secretary for Mental Health and Substance Use in the U.S. Department of Health and Human Services and the Administrator of the Substance Abuse and Mental Health Services Administration.

The opinions expressed herein are the view of the speakers and do not reflect the official position of the Department of Health and Human Services (DHHS), SAMHSA. No official support or endorsement of DHHS, SAMHSA, for the opinions described in this document is intended or should be inferred.

The use of affirming language inspires hope and advances recovery.

LANGUAGE MATTERS.

Words have power.

 PEOPLE FIRST. 

The ATTC Network uses affirming language to promote the promises of recovery by advancing evidence-based and culturally informed practices.

National Mental Health and Substance Use Policy Laboratory

*Guide: Adapting Evidence-Based Practices for
Under-Resourced Populations*

Informational Webinar

October 4, 2022



SAMHSA
Substance Abuse and Mental Health
Services Administration

Welcome

EVIDENCE-BASED RESOURCE GUIDE SERIES

Adapting Evidence-Based Practices for Under-Resourced Populations



SAMHSA
Substance Abuse and Mental Health
Services Administration

SAMHSA
Substance Abuse and Mental Health
Services Administration

Evidence-Based Resource Center Guides



SAMHSA's vision for the guides – and the underlying foundation – is to:

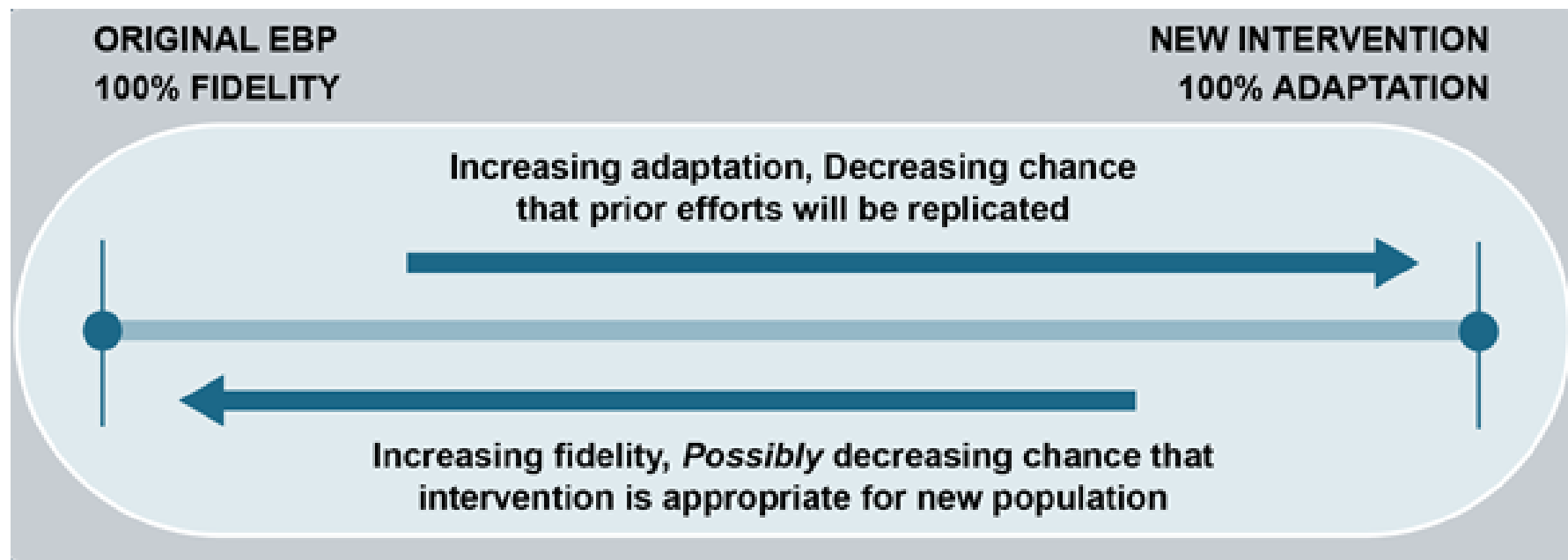
- Reflect scientific rigor and make recommendations from the evidence base.
- Provide expert consensus.
- Be comprehensive and modular for use by practitioners, communities, administrators, and other stakeholders.
- Be accessible to the field.

Adaptation of an EBP Defined

Goal: Improve the fit or effectiveness of an evidence-based practice (EBP) for a given population

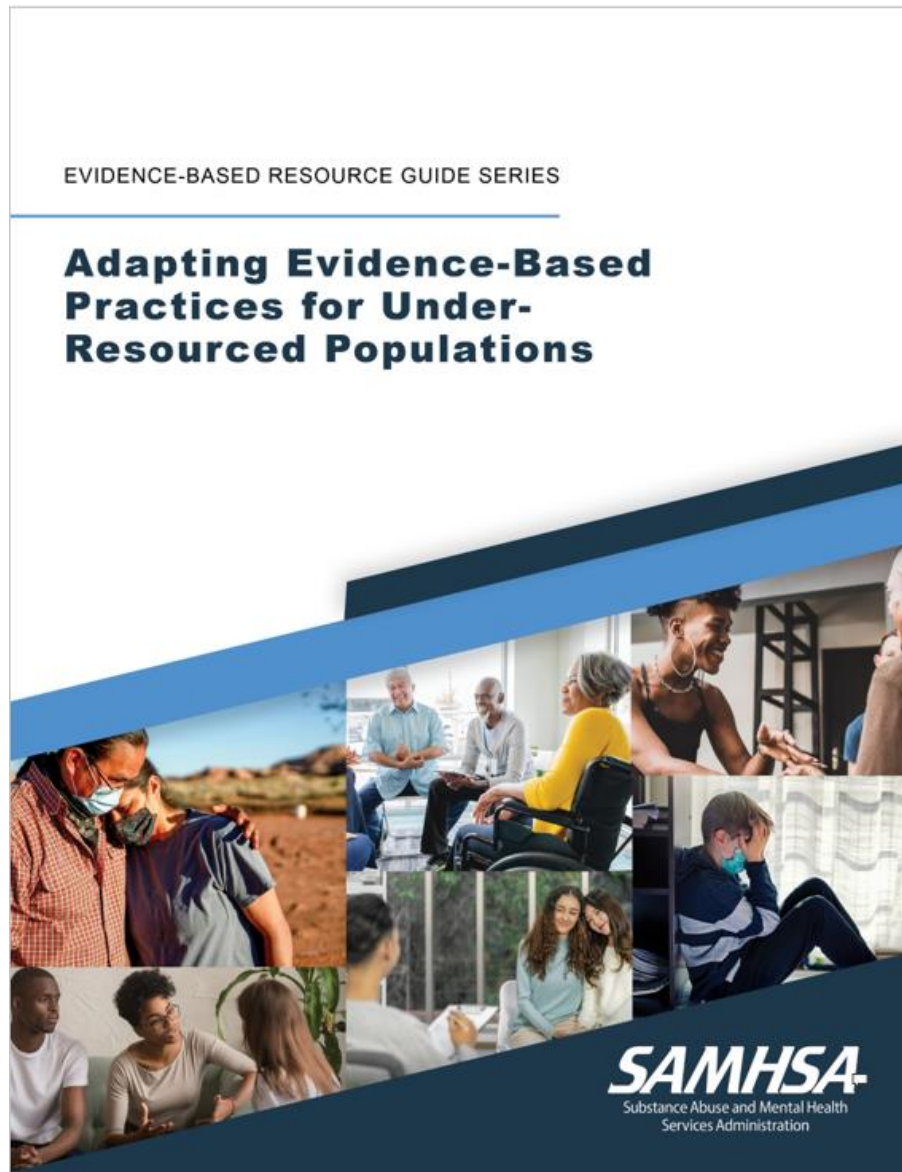
- Involves making changes to better fit the needs of the under-resourced population
 - Under-resourced communities are defined as population groups that experience greater obstacles to health, based on characteristics such as, but not limited to, race, ethnicity, religion, income, geography, gender identity, sexual orientation, and disability.
- Does not affect, remove, or change key or core elements
- Includes a process of thoughtful and deliberate alteration to the design or delivery of an intervention

Fidelity vs. Fit



Adapted from: Marsiglia, F. F. & Booth, J. M. (2015). Cultural adaptation of interventions in real practice settings. *Research on Social Work Practice*, 25(4), 423-432.

Guide Introduction



Guide's Content

- Chapter 1 - Issue Brief
- Chapter 2 - What Research Tells Us
- Chapter 3 - Guidance for Adapting Evidence-based Practices (EBPs)
- Chapter 4 - Examples of Cultural Adaptations of EBPs
- Chapter 5 - Resources for Evaluation and Quality Improvement

The Role of the TEP and Reflections



Angela Weeks, DBA

Director,
Center of Excellence –
LGBTQ+ Behavioral Health
Equity

Process of Adapting an EBP



Process of Adapting an EBP – Step 1



Engage the
community
and define
the issue 01

- Engage all stakeholders within the community
- Understand the community's cultural beliefs, values, needs, and expectations
- Identify the problem at hand
- Identify funding to support community engagement activities

Process of Adapting an EBP – Step 2



Assess
organizational
capacity and
readiness

02

- Assess community readiness
- Assess current resources and barriers
- Form steering committees or other teams
- Identify and obtain additional funding

Process of Adapting an EBP – Step 3



Review EBP,
choose one, and
re-assess the
organizational
capacity

03

- Identify potential EBPs
- Review the EBPs
- Identify core components
- Continue to engage community stakeholders

Process of Adapting an EBP – Step 4



Select non-core components that can be modified and adapt the EBP
04

- Choose non-core components to be adapted
- Consider specific risk factors
- Document adaptation process

Process of Adapting an EBP – Step 5



05

Train staff
and test
adapted
materials

- Increase organizational capacity
- Consider practitioner characteristics
- Pilot test the adaptation and revise

Process of Adapting an EBP – Step 6



06 Implement the adapted EBP and evaluate the implementation and outcomes

- Implement the adapted EBP
- Eliminate barriers to care
- Avoid additional changes
- Evaluate the implementation

Process of Adapting an EBP – Step 7



07

Assess and
make further
adaptations

- Make modification based on data
- Continue assessment
- Repeat steps 3 through 5 as appropriate

Research on Adaptation of MI, DBT, and CBT

- Conducted systematic literature review
 - 4 Motivational Interviewing (MI) articles
 - 2 Dialectical Behavior Therapy (DBT) articles
 - 7 Cognitive Behavioral Therapy (CBT) articles
- For each study, documented research design, outcomes, populations, and types of adaptations
- Identified gaps in research

YOUTH AFFIRM



Shelley Craig, PhD
Principal Investigator,
Youth AFFIRM

Factor-Inwentash Faculty
of Social Work
University of Toronto

Choctaw Nation



Shauna Humphreys, MS

Behavioral Health Director,
Choctaw Nation Health Services



April Silas, PhD

Executive Director, Homeless
Children's Network and
Creator of Ma'at Program

Culturally Relevant and Equitable Evaluation

Evaluation Process Step



Putting Together
an Evaluation
Team



Evaluation
Purpose(s) and
Audience(s)



Evaluation
Questions



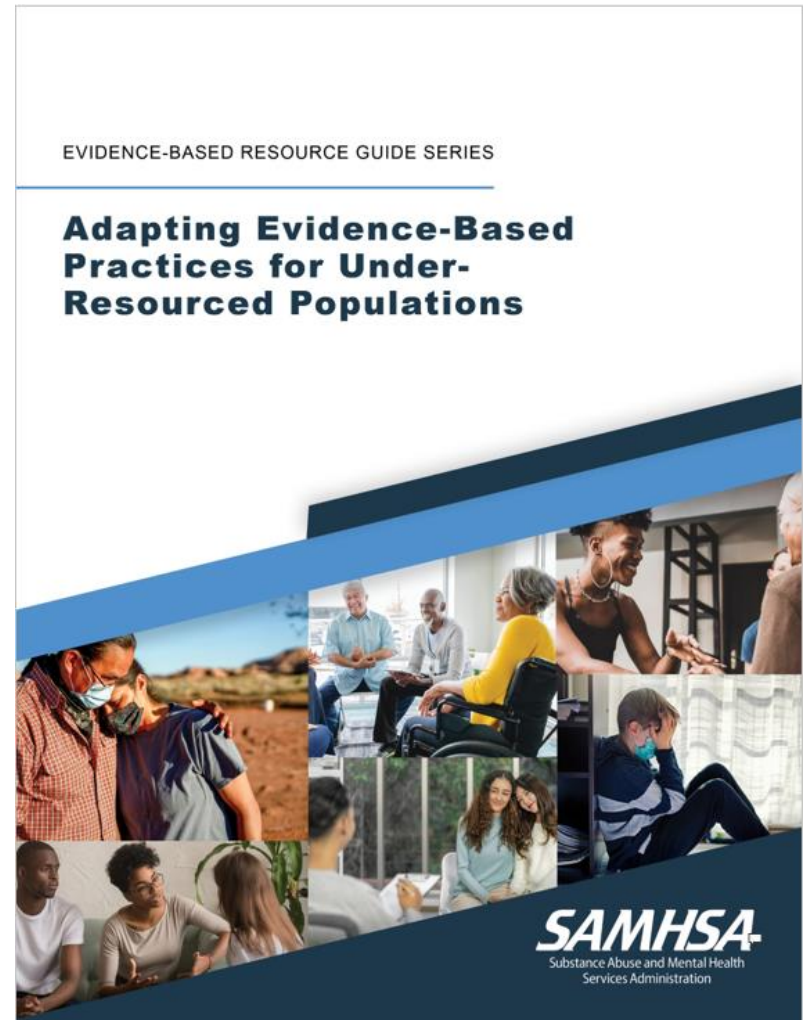
Outcomes and
Indicators



Data Collection,
Analysis, and
Reporting

Conclusions

- The guide is now available on the SAMHSA Store.
https://store.samhsa.gov/sites/default/files/SAMHSA_Digital_Download/PEP22-06-02-004.pdf
- For more information, contact ebprc@samhsa.hhs.gov





ATTC

Addiction Technology Transfer Center Network
Funded by Substance Abuse and Mental Health Services Administration

Next Steps

- The ATTC Network is funded through SAMHSA to provide this webinar. As part of receiving this funding we are required to submit data related to the quality of this event.
- Please take a moment to complete a **brief** survey about today's webinar.
- **SURVEY:** <https://ttc-gpra.org/P?s=516696>

Within the next two weeks:

- The recording of today's presentation will be available on attcnetwork.org.
- Attendees will receive a follow-up email with instructions for downloading a certificate of completion.



CONNECT WITH US



<https://attcnetwork.org>



[ATTC Virtual Booth](#)



[ATTC News](#)

Thank You!

For more information, contact
ebprc@samhsa.hhs.gov