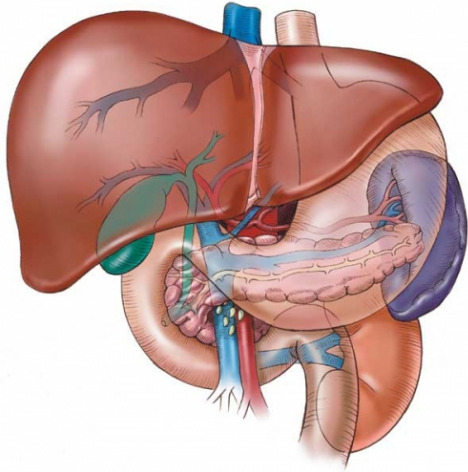


The Dangerous Health Effects of Alcohol: What Your Patients and Clients Need to Know



WHEN:

Friday, December 8, 2023
10:00 AM – 1:15 PM PST

WHERE:

Zoom Webinar

CONTACT FOR MORE INFO:

Brandy Oeser

boeser@mednet.ucla.edu or

Tracy Chen

tchen877@usc.edu

[CLICK HERE TO REGISTER](#)

A COLLABORATION BETWEEN Southern California Research Center for ALPD and Cirrhosis, County of Los Angeles Department of Public Health, Substance Abuse Prevention and Control (SAPC), USC Institute for Addiction Science, UCLA Integrated Substance Abuse Programs and the Pacific Southwest Addiction Technology Transfer Center

This lecture series event is designed for providers and clinicians of the SAPC network and will provide a detailed review of the negative health impacts of alcohol consumption, especially as it relates to liver and pancreatic diseases. Specifically, this lecture will address the synergistic effect of alcohol and secondary risk factors such as diet and viral hepatitis on the development and progression of alcohol associated liver and pancreatic diseases (ALPD). Based on scientific studies, the Southern California Research Center for ALPD and Cirrhosis believes the best approach to understanding ALPD is to define the relationship between the diseases and these risk factors. This allows for the development of more effective prevention and treatment measures to be utilized by healthcare professionals. Through this lecture, participants will learn about the risk factors for ALPD, gain a deeper understanding of alcohol associated diseases in the community, and learn about current treatment options for alcohol use disorder and ALPD. A panel discussion with the presenters will follow the presentations which will allow for greater discussion and deepening in knowledge, translating into meaningful encounters substance use providers may have with patients.

Learning Objectives:

At the conclusion of the training, participants will be able to:

1. Identify two (2) population groups at risk for liver and pancreatic diseases as a result of their alcohol consumption and how alcohol correlates to these diseases.
2. Explain two (2) reasons why alcohol associated liver disease is connected to metabolic dysfunction (MetALD).
3. Specify two (2) assessment options and two (2) treatment options for Alcohol Use Disorder.
4. Describe three (3) individual behavioral and three (3) health factors which may increase the risk of liver and pancreatic diseases among persons consuming alcohol.

This FREE lecture series event will be recorded.

Pre-registration is required and is limited to 1000. You will receive a Zoom confirmation if space has been reserved for you.

Refund/Cancellation Policy: This event is FREE. Please cancel your registration at least 72 hours in advance of the training by emailing Brandy Oeser at boeser@mednet.ucla.edu. You can also cancel directly via Zoom. Please see page 3 for Continuing Education details.



Research reported in this presentation was supported by the National Institute on Alcohol Abuse and Alcoholism of the National Institutes of Health under Award #P50AA011999. The content is solely the responsibility of the authors and does not necessarily represent the official views of the National Institutes of Health.



If you need a disability-related reasonable accommodation/alternative format for this event, please contact Brandy Oeser at (310) 779-9067 or email boeser@mednet.ucla.edu by November 30, 2023.

SPEAKERS:



Lourdes Baezconde-Garbanati, PhD, MPH, MA

Keck School of Medicine of USC

Dr. Lourdes Baezconde-Garbanati is Associate Dean for Community Initiatives and “Distinguished Professor” in Population and Public Health Sciences at the Keck School of Medicine of the University of Southern California (USC). She is Associate Director for Community Outreach and Engagement at the USC Norris Comprehensive Cancer Center, Director of the Center for Latino Health. She has produced award winning interventions transforming the way we deliver cancer knowledge through narrative to diverse populations. She has five academic degrees from Latin America, Europe, and the United States, including an MPH and a PhD in Public Health from UCLA. She speaks multiple languages, has published widely in scientific journals; is the recipient of the Humanitarian of Hope award from the Celebrate Life Ministry, the Hands of Hope award from the Lazarex Cancer Foundation, and a Distinguished Career Award from the American Public Health Association Latino Caucus.



Terry D. Church, DRSc, MA, MS

USC Institute for Addiction Science & USC Alfred E. Mann School of Pharmacy

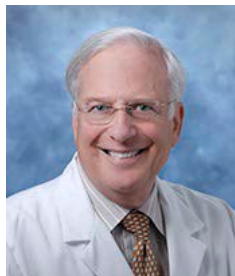
Dr. Church is currently an Assistant Professor in Regulatory and Quality Sciences at the University of Southern California, School of Pharmacy. He is Assistant Director of Pharmacy Undergraduate Programs and teaches in the Pharmacy Undergraduate Program. Prof. Church’s academic focus is on application of pharmaceutical regulations, patterns of addiction, disaster management, and education and training. His areas of interest and expertise include history and geography of drugs, biorepository regulation and ethics; drug addiction and regulation of controlled substances; regulatory practices for continuity and disaster planning; and policies and ethics of academic research.



Brian P. Lee, MD

Keck School of Medicine of USC

Dr. Lee is a NIAAA-funded transplant hepatologist specializing in patient care before and after liver transplant. His research focuses on improving health for patients with alcohol use disorder and alcohol liver disease, through 1) early liver transplant for alcohol hepatitis; 2) inequities in healthcare access; 3) public policy and advocacy; 4) novel therapeutics and translational studies. His research and advocacy have led to changes in National and California transplant and insurance policies, and has incorporated into practice guidelines across North America, Europe, Latin America, and Asia. He serves as a voting member on the FDA Gastrointestinal Drugs Advisory Committee.



Stephen J. Pandol, MD

Cedar Sinai Medical Center & David Geffen School of Medicine at UCLA

Dr. Pandol is currently Director, Basic and Translational Pancreas Research and Leader of Translational Oncology at Cedars Sinai-Medical Center and Professor of Medicine at the David Geffen School of Medicine at UCLA. He is founder of Avenzoar Pharmaceuticals, a company developing agents for treatment and prevention of therapy resistance and metastatic cancer focused on pancreatic cancer and other gastrointestinal cancers; and Lucid Sciences which develops advanced 3D and VR imaging techniques for precision medicine applications. He is a leading international authority in gastroenterology and pancreatology.

Keck School
of Medicine
of USC

UCLA Integrated Substance Abuse Programs



USC Institute for
Addiction Science

Continuing Education:

The training course meets the qualifications for the provision of three (3.0) continuing education credits/ contact hours (CEs/CEHs). UCLA ISAP is approved by the California Association of Marriage and Family Therapists to sponsor continuing education for LMFTs, LCSWs, LPCCs, and/or LEPs (Provider #64812). UCLA ISAP maintains responsibility for this program/course and its content. Course meets the qualifications for three (3.0) hours of continuing education credit for LMFTs, LCSWs, LPCCS, and LEPs as required by the California Board of Behavioral Sciences. UCLA ISAP is also an approved provider of continuing education for RADTs I/II, CADCs-CASs, CADCs I/II, CADCs-CSs, and LAADCs (CCAPP, #2N-00-445-1123), CATCs (ACCBC/CAADE, #CP40 872 C 0825), and CAODCs (CADTP, #151). CE credit will be awarded six-eight weeks after the virtual training.

Partial credit will not be available for those participants who arrive late or leave early.



UCLA Integrated Substance Abuse Programs (ISAP) is approved by the American Psychological Association to sponsor continuing education for psychologists. UCLA ISAP maintains responsibility for this program and its content. CE credit will be awarded for full participation within 6 weeks following the conclusion of the training. Partial credit will not be available for those participants who arrive late or leave early.



UCLA Integrated Substance Abuse Programs (ISAP) CME is accredited by the California Medical Association (CMA) to provide continuing medical education for physicians.

UCLA ISAP CME designates that this training course qualifies for the provision of a maximum of three (3.0) AMA PRA Category 1 Credit™ of Continuing Medical Education (CME). Physicians should claim only the credit commensurate with the extent of their participation in the activity.

The California Board of Registered Nursing recognizes that Continuing Medical Education (CME) is acceptable for meeting RN continuing education requirements as long as the course is certified for AMA PRA Category 1 Credit™ (rn.ca.gov). Nurses will receive a Certificate of Participation following this activity that may be used for licenser renewal.

Instructions for Filing a Grievance Concerning UCLA ISAP's Continuing Education Program:

Please contact Dr. Thomas E. Freese, CE Program Administrator, in writing (UCLA ISAP, 10911 Weyburn Avenue, Suite 200, Los Angeles, CA 90024-2886) or by phone (310-267-5397). Alternately, you may contact Dr. Gloria Miele or Dr. James Peck, ISAP-affiliated doctoral-level psychologists responsible for program planning for the ISAP CE Program.

Drs. Miele and Peck can be reached in writing at: 10911 Weyburn Avenue, Suite 200, Los Angeles, CA 90024-2886 or by phone at: 310-267-5888 (Miele) or 310-267-5346 (Peck).

Please contact Brandy Oeser at 310-779-9067 or via email at boeser@mednet.ucla.edu if you have registration or CE/CME questions.

Funding for this lecture was made possible in part by cooperative agreement 5UR1TI080211-02 from the Substance Abuse and Mental Health Services Administration.