

Empowering Communities to Address America's Mental Health and Substance Use Needs

Session Three – Why ROSC?

Michael T. Flaherty, Ph.D.

Clinical Psychologist

**Founder – Institute for Research, Education and Training in the Addictions
(IRETA)**

Board President, Annapolis Coalition on Behavioral Workforce Development

The Great Lakes Addiction Technology Center

August 15th, 2024

flahertymt@gmail.com

Today's Focus

Webinars #1 and #2

Roots of ROSC

Recovery as a Unifying Construct
to Empower Community Up Solutions

Recovery Science Repositories today

ROSC Evaluation: Three Pillars; overdose
& Brandeis University

How to begin to build your ROSC

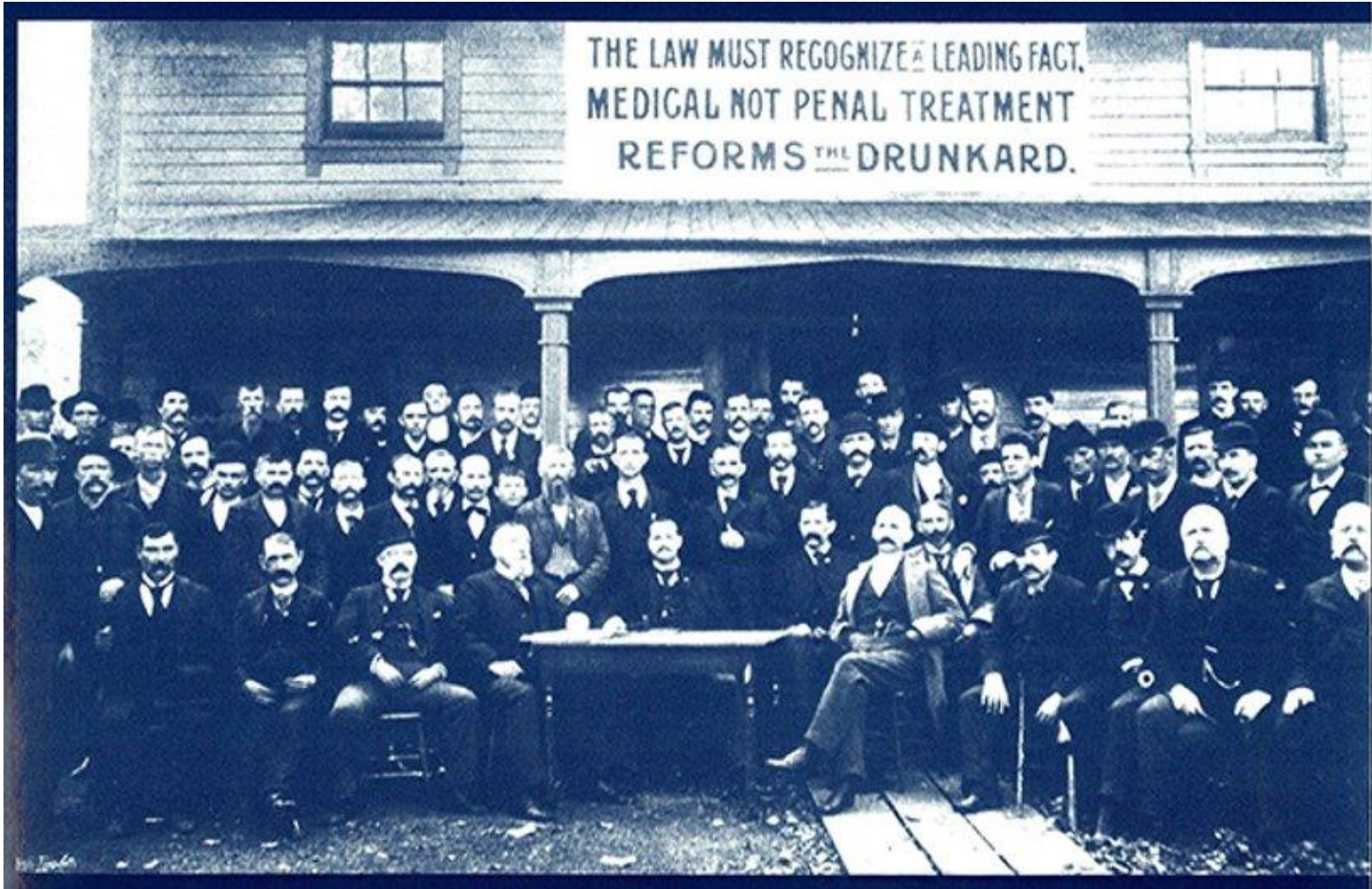
ROSC Webinars #1 and #2

- #1 Basic terms and how to begin to build your ROSC
- #2 ROSC and Workforce Development

Roots of Recovery



Roots of ROSC



Recovery as a Unifying Construct

Recovery is a process through which individuals improve their health and wellness, live a self-directed life and strive to reach their full potential in four major dimensions: Health, Home, Purpose and Community.

- SAMHSA

Community Empowered Solutions

The focus of a Recovery Oriented System of Care (ROSC) is to create a coordinated system and structure for community & provider led, accountable services and resources across a continuum of care:

Education – Prevention - Intervention
Treatment and Recovery

What is a ROSC?

A **recovery-oriented system of care** is a coordinated **network** of *community* services and supports that are person-centered and built upon the strengths and resiliencies of individuals, families, and the community itself to achieve recovery and measured improved health, wellness and quality of life for those at risk in the community.

Recovery Science Repositories Today

SAMHSA – www.samhsa.gov/recovery

NIDA – <https://nida.nih.gov/recovery>

Recovery Research Institute –Harvard
<https://www.recoveryanswers.org>

William White Papers:
<https://www.chestnut.org/William-white-papers>

Great Lakes ATTC: <https://attcnetwork.org/center/great-lakes-attc>

How to Begin ROSC

Identify your leaders – community & providers

Agree on your Vision, “overarching construct,”
terms and principles

Assess for gaps in service and continuum

Imbed a philosophy of recovery across all

Measure and continuously improve outcomes

ROSC Evaluation

Three Pillars of ROSC:

Improve access

Improve retention

Improve outcomes: recovery measures

Provide accountability and progress

Expand workforce

Empower local solutions

Evaluation: Role & Findings

Joanna Taylor, PhD
Brandeis University
Institute for Behavioral Health
Senior Research Associate

The Great Lakes Addiction Technology Transfer Center
August 15, 2024

Agenda

- Role of Evaluation
- Role of Evaluators
- Outcomes findings

CDC's Evaluation Framework



Source: <https://www.cdc.gov/evaluation/framework/index.htm>

Types of Evaluation

Types	When	Why
Formative Evaluation	Before implementation or when existing initiative is being modified	Allows for modifications prior to full implementation
Process Evaluation	During implementation	Provides early warning for needed adjustments
Outcomes Evaluation	After initiative conducts intervention with target population	Tells whether initiative is being effective re: it's objectives
Economic Evaluation (Cost-Benefit)	Beginning and during initiative operations	Provides managers & funders: "how much bang for your bucks"
Impact Evaluation	During and end of initiative	Provides evidence for policy and funding decisions

What does it take?

- Engage stakeholders (program participants, providers, organizational leaders, policy makers, media)
- Build staff understanding of goals and their capacity
- Empower team members & program participants
- Identify data sources
- Ensure data completeness and accuracy
- Provide a feedback loop with useable information
- Write grant proposals
- Monitor budgets and resources
- Volunteer to be a part of the community

Evaluator's role

- Technical skills
- Content knowledge
- Interpersonal skills
- Transparency

We hired you,
your job is to
report what
we say.



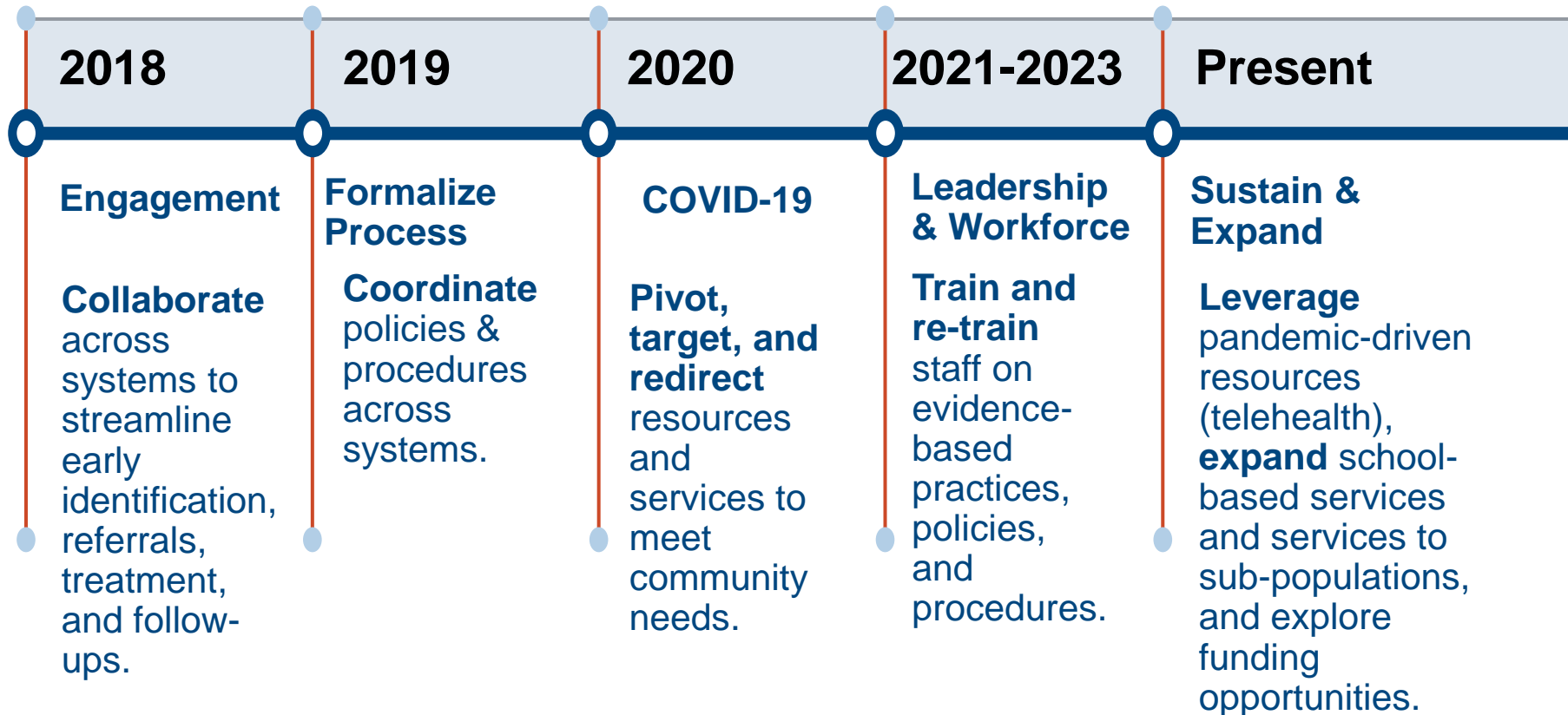
You did hire me,
but as an evaluator
that's not my job.



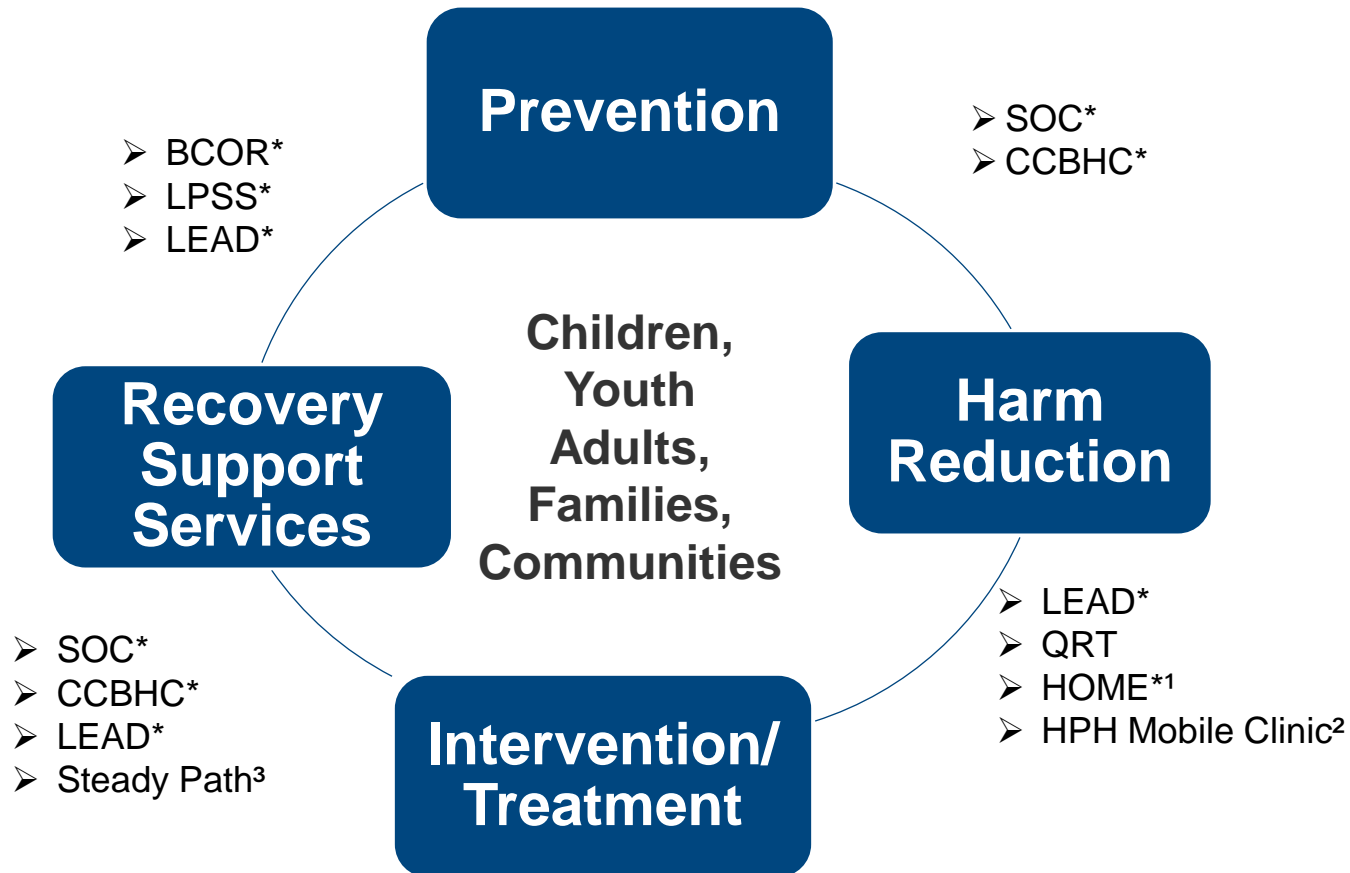
freshspectrum

Hancock County ROSC Evaluation Timeline

Improving services for youth, adults, and families



Current Community-Engaged Initiatives in Hancock County, Ohio



Initiative Metrics – Steady Path

The Steady Path Stabilization Center provides short-term stabilization services to clients in crisis.

“The Steady Path has become the highest level of care available from the community mental health system.... So that there's something between the emergency room and going home, something between the jail and going home, something between inpatient and going home and/or before we get into those places to try and stabilize and keep people safe.”

Initiative Metrics – Steady Path

At the end of 18 months of services (1/22 – 9/23):

- **167** enrollments, with referrals from mental health, housing, and criminal justice sectors.
- **90%** provided with psychotropic meds.
- **62%** discharged with goals met, 9% to a higher level of care.
- Began accepting admissions from neighboring counties, expanding the reach of Hancock County's support systems.

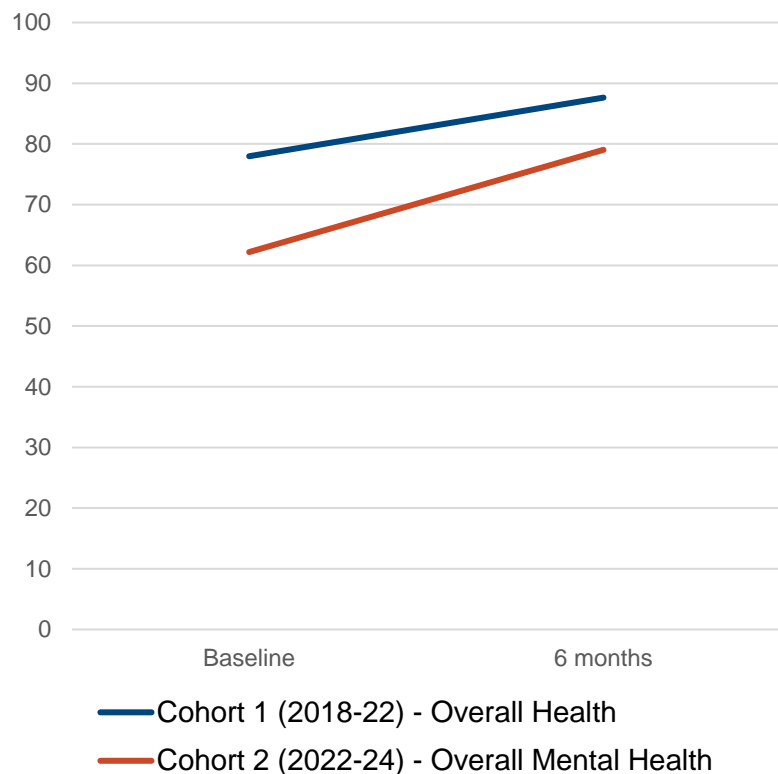
Initiative Metrics - SOC

The System of Care grant focuses on multi-systems involved youth in Hancock County. Begun in 2018, the grant was re-awarded in 2022.

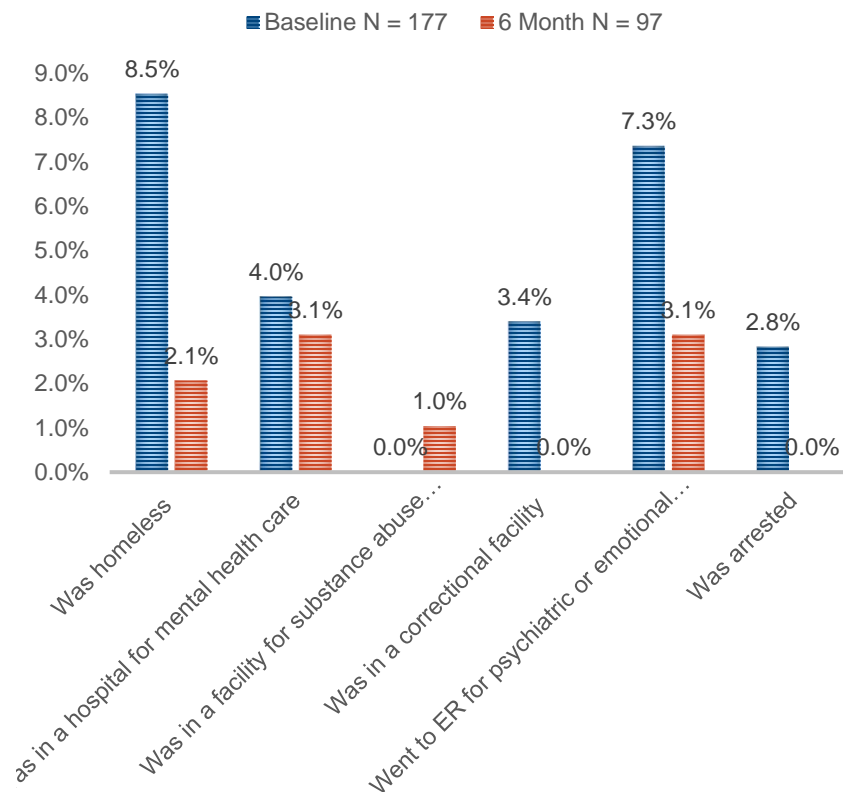
“I would say, children’s services, juvenile court, and the behavioral health system worked together sometimes, but predominantly were pretty siloed. Early on we did a couple of case studies where we brought all those partners together and really reviewed family cases. And that began an opportunity for agencies to understand how each other functions, and why they function that way... And then I think we began problem-solving together versus separately.”

Initiative Metrics - SOC

Percent reporting Good, Very Good, or Excellent Health/Mental Health



Unstable or crisis housing, previous 30 days (SOC 1.0)



Initiative Metrics - LPSS

The Leveraging Peer Support Services grant supports people in recovery by providing individual peer support services, community engagement, and group sessions.

During its first year of services (9/22 – 9/23), peers supported people in recovery:

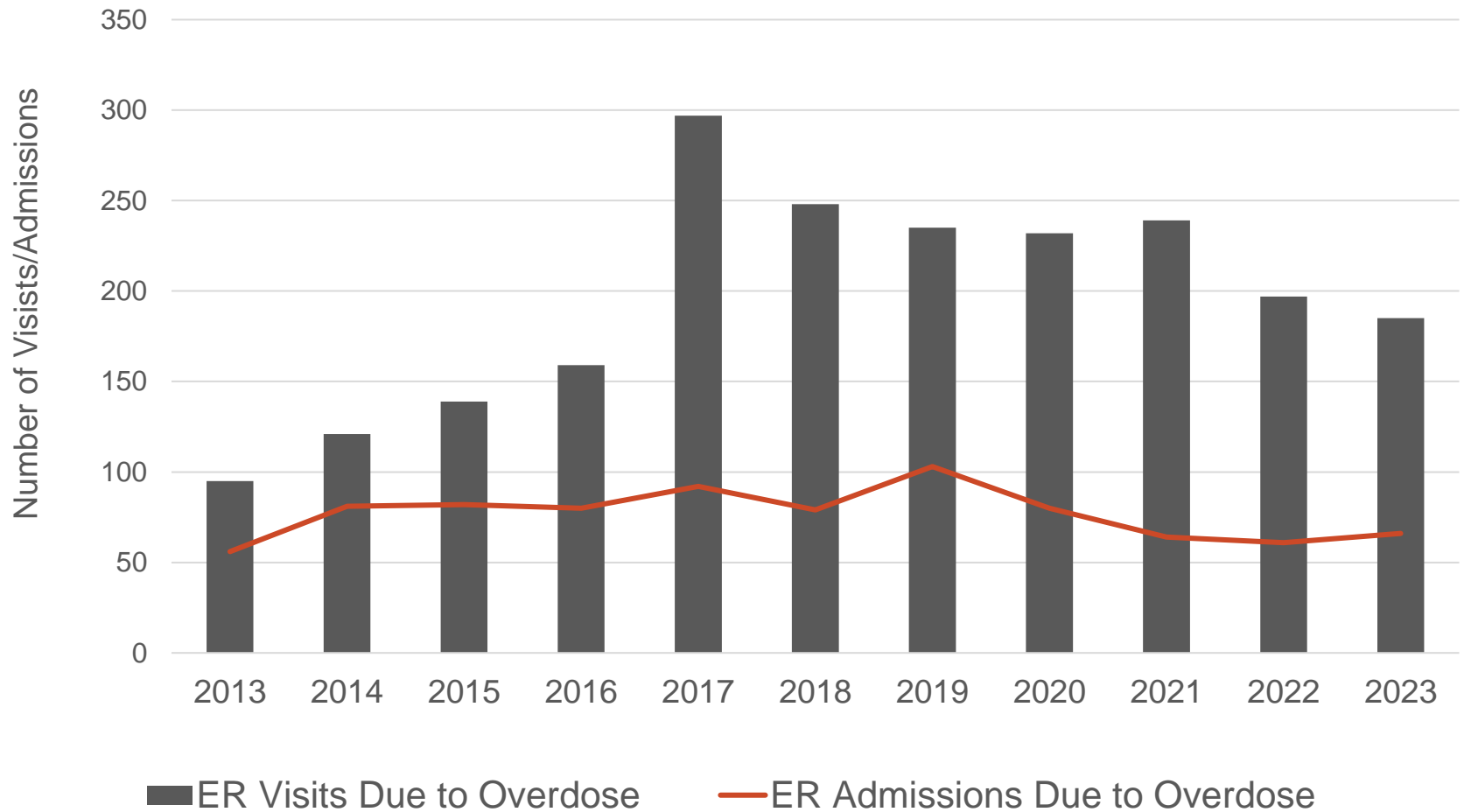
- more than **300** individual contacts
- provided **78** group sessions
- **36** community support sessions
- outreached to **84** community organizations and businesses to build awareness of and support for recovery services.



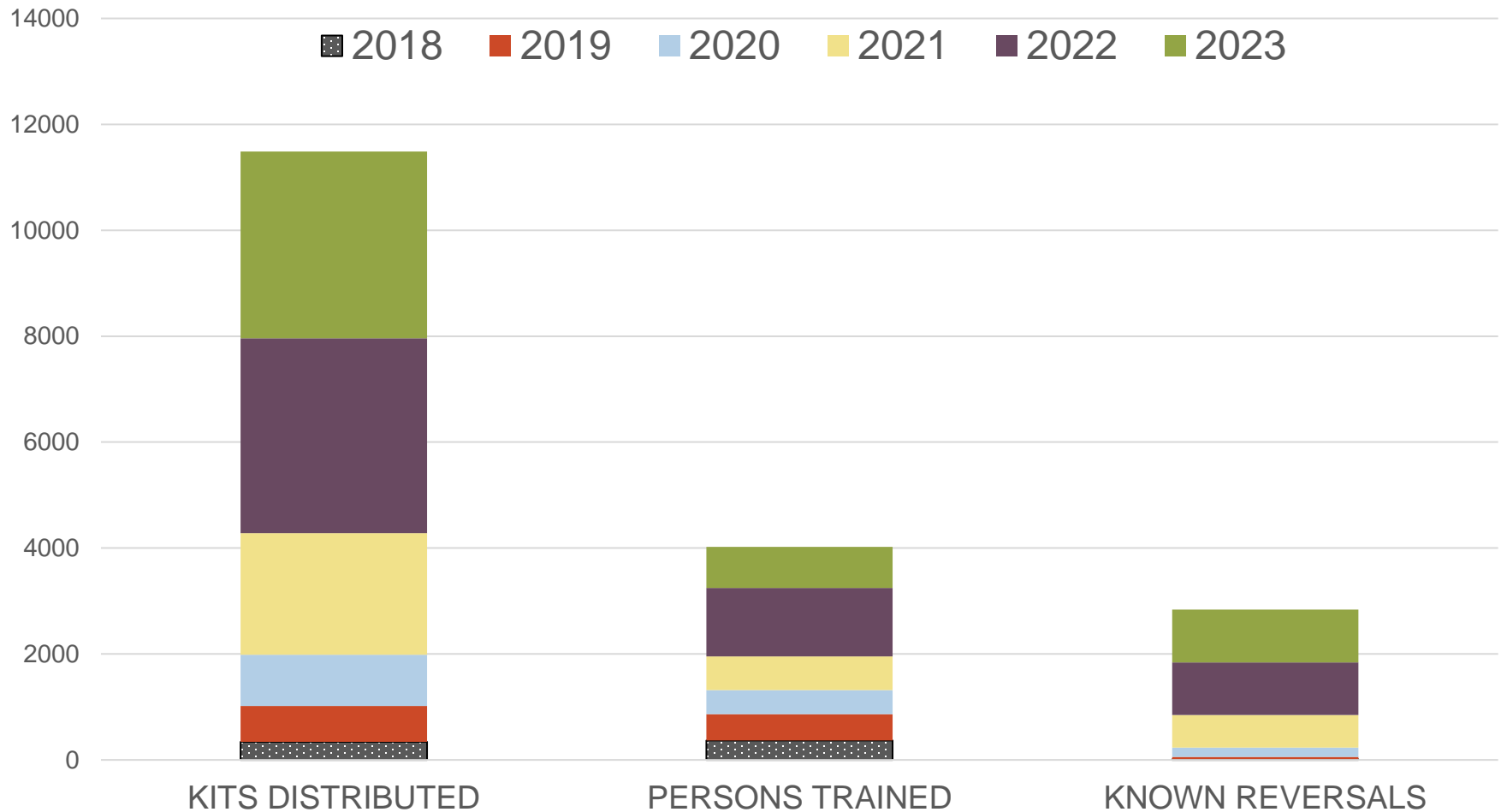
Community Metrics

Ten Year Trends: 2013 - 2023

Overdose-Related Emergency Department Visits & Admissions: 2013-2023

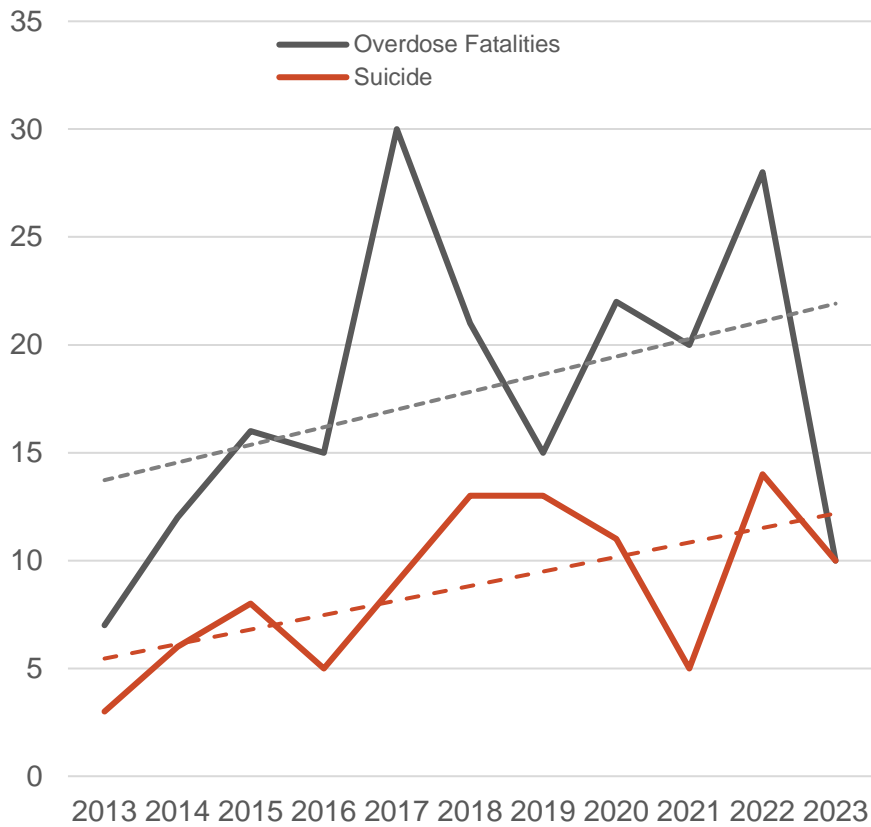


Naloxone Related Metrics

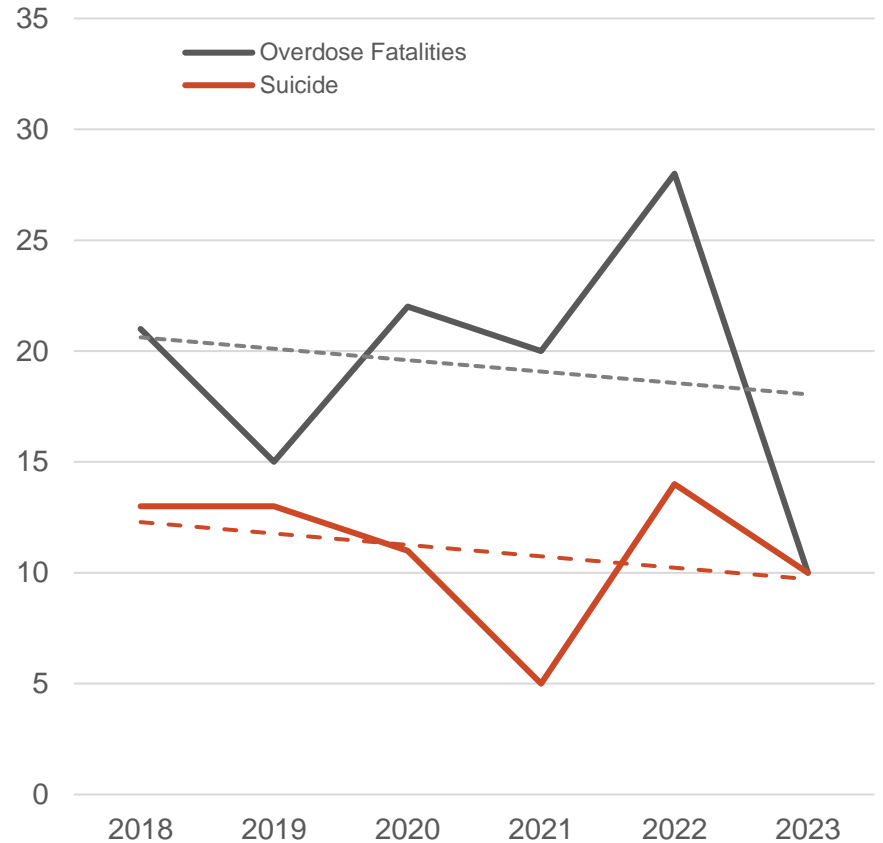


Fatalities: 2013-2023 vs. 2018-2023

Fatalities by Overdose and Suicide:
2013-2023

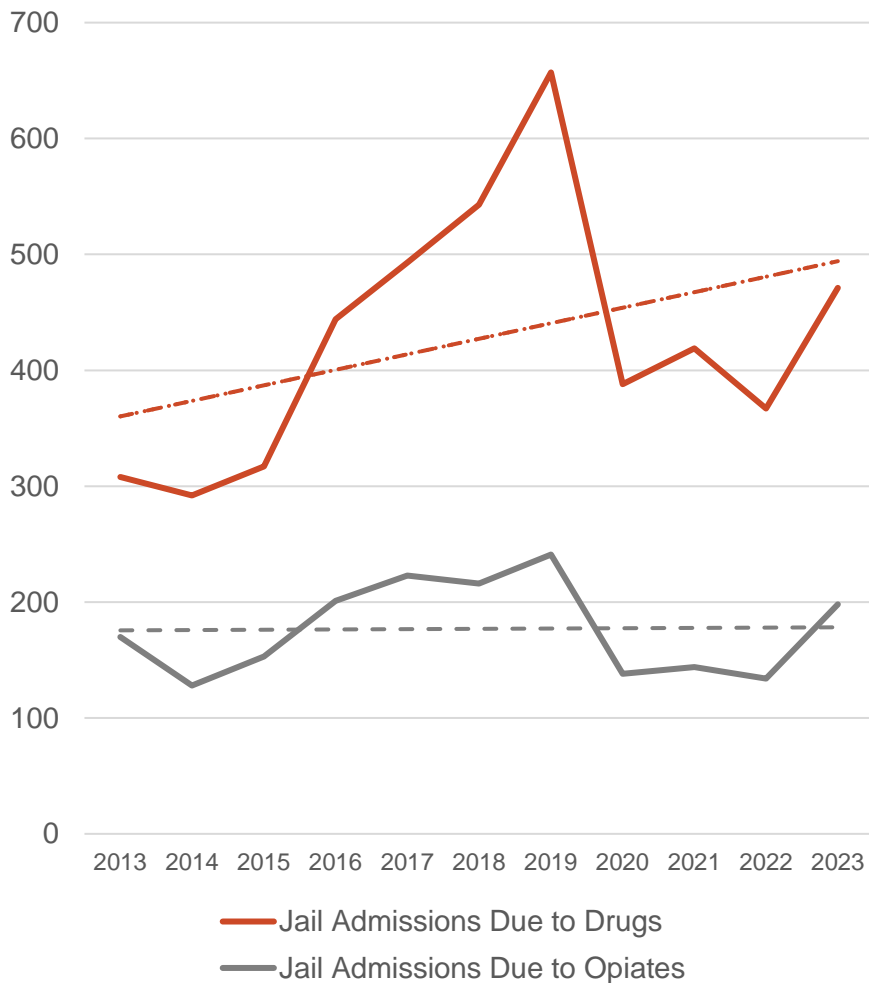


Fatalities by Overdose and Suicide:
2018-2023

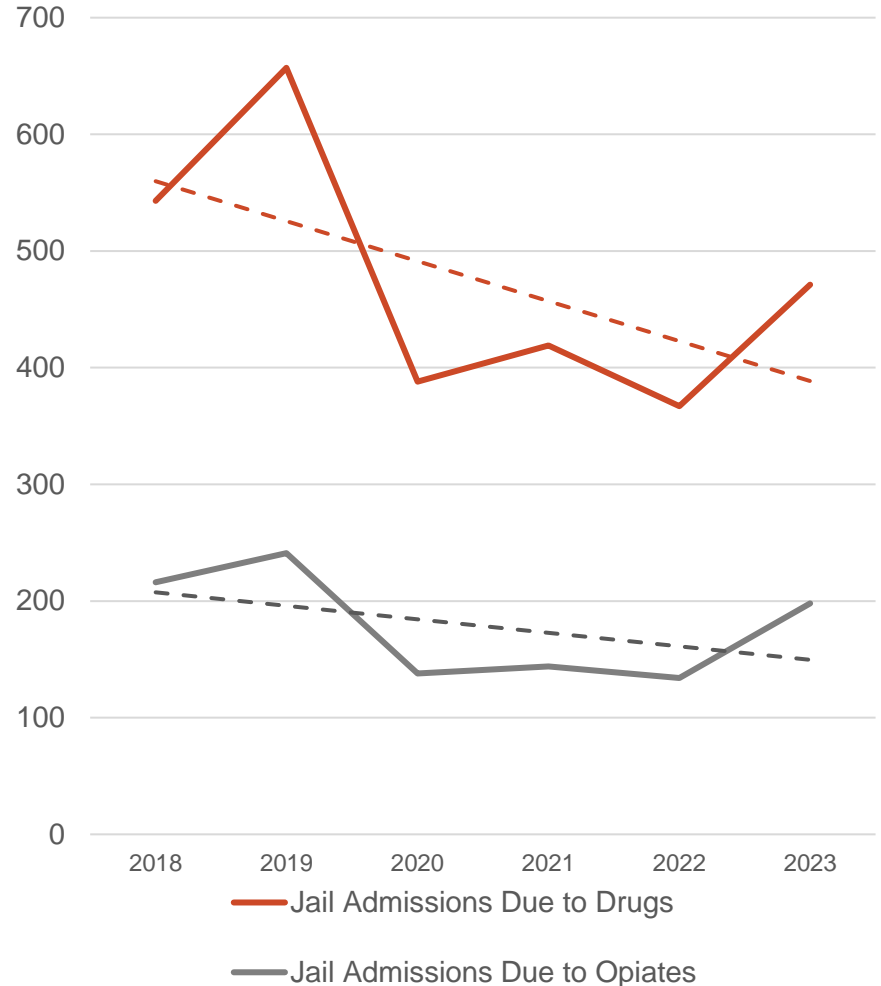


Jail Admission due to Drugs/Opiates

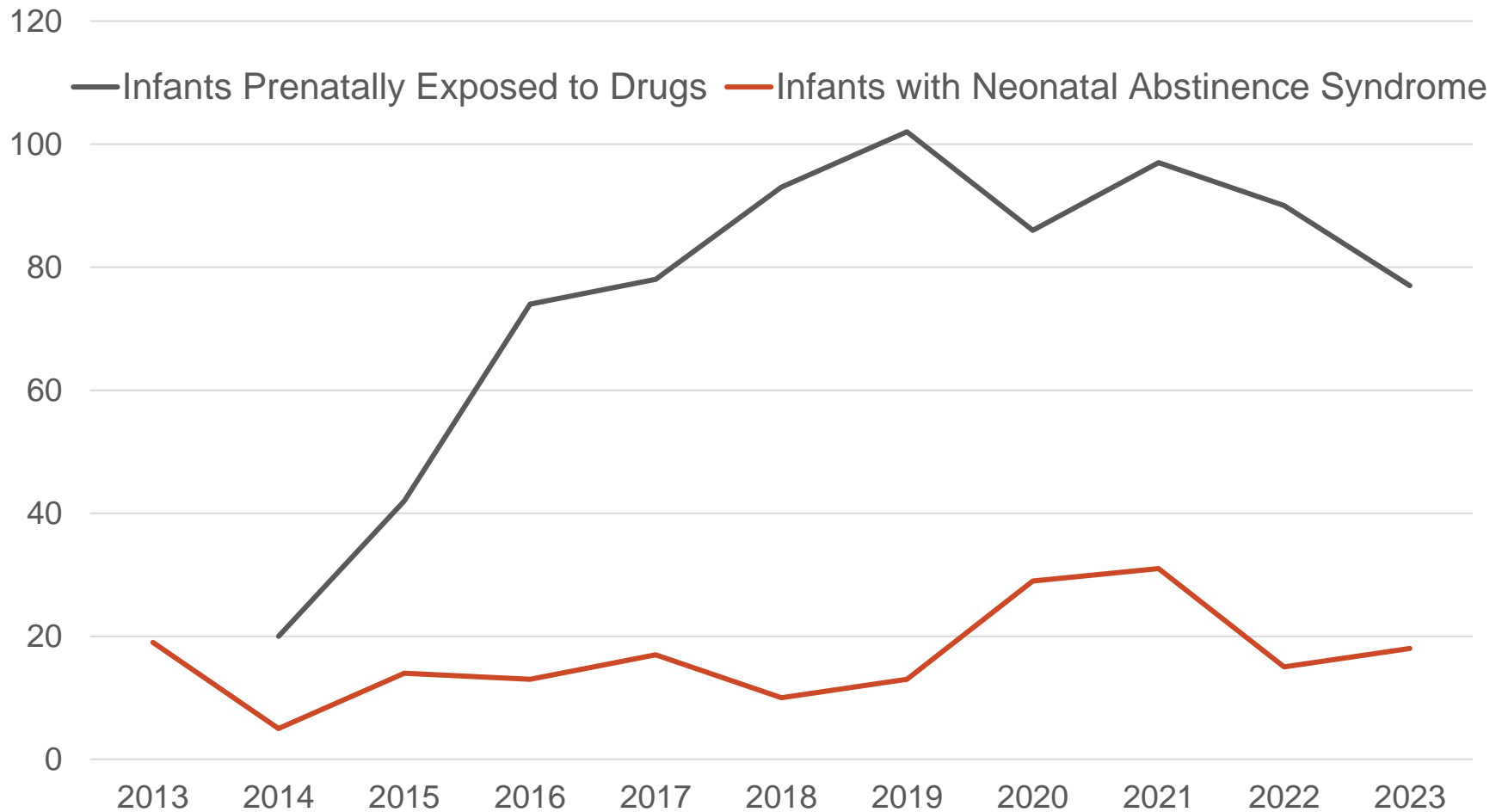
Hancock County Jail Admissions:
2013 - 2023



Hancock County Jail Admissions:
2018 - 2023



Infants Prenatally Exposed to Drugs: 2013-2023



Summary

- ROSC-driven initiatives provide a framework for systems (i.e., behavioral health treatment, criminal justice/law enforcement, social service, veteran's services, recovery support) to collaborate and coordinate services through ongoing education and policy changes.
- Overall, evaluation measures indicate positive change: improved mental health for children and youth, increased access to treatment and harm reduction services.

ATTC Presentation

Precia Stuby

Executive Director

Hancock County ADAMHS

August 2024

Gratitude





Lessons Learned

- Establish a point of accountability/leadership.
- Don't lose site of the vision.
- Homework matters! It's hard to argue with science.


Lessons Learned Continued...

- Find ways to measure efforts from multiple systems and share results on a regular basis with a well-rounded leadership group who is overseeing efforts.
- The more you mobilize and include the recovery community, the more relevant and expedient change will occur.
- Change is not linear. Match needs with opportunities.

Lessons Learned Continued...

- When there are barriers, be respectful, but persistent.
- Be inclusive: there's a role for every person, system, organization, etc.
- Celebrate moments and milestones.





“Meet people where
they are and make
every encounter an
opportunity for
recovery.”

A New Continuum Emerges

Treatment, Prevention and Early Intervention

MAT
Residential Stabilization
Drug Courts/Family
Preservation Court
MRSS
MOMS
School "teams"
Peer Support

Recovery Support

FOCUS (Mental Health
and Addiction)
Recovery Housing
Recovery
Guides/Battle Buddies
LOFT

Outreach and Engagement

Safe Works
LEAD
QRT
LPSS
Welcome to a
NewLife

Facilitated Panel with Zach Thomas

**Treatment,
Prevention and Early
Intervention**

Ginny Williams, MA,
LPCC-S

Chief Culture &
Transformation Officer

Family Resource Center

**Recovery
Center**

Brooke Nissen, LCDC
Executive Director

FOCUS Recovery and
Wellness Community

**Outreach and
Engagement**

Cristina Christensen,
MSW, LSW

Criminal Justice
Program Supervisor

Family Resource
Center